

ICREATIVE SYSTEMS COMPANY PROFILE

Modern business driven
by innovation

399/15, Moo 4, The Modern Park Village,
Chai Mongkol Subdistrict, Mueang District,
Nakhon Ratchasima Province, 30000, Thailand.

Email: contact@icsco.ai
Tel: 097-078-1679





We are iCreativeSystems Co., Ltd., Thailand's leading developer of Unmanned Aerial Vehicles (UAVs) for professional surveying.

EXPERIENCE

FUNDING



CUSTOMERS



AWARD



What's Our Business

iCreativeSystems
Company Limited



Hardware



Software



UAV Services

PRODUCTS



eVTOL



Ground Control Station



Outdoor Multirotor



LiDAR Scanner



VILVERIN VL340



 **3.5 kg**
Swapable payload
compartment

 **200km+**
Maximum travelled
distance

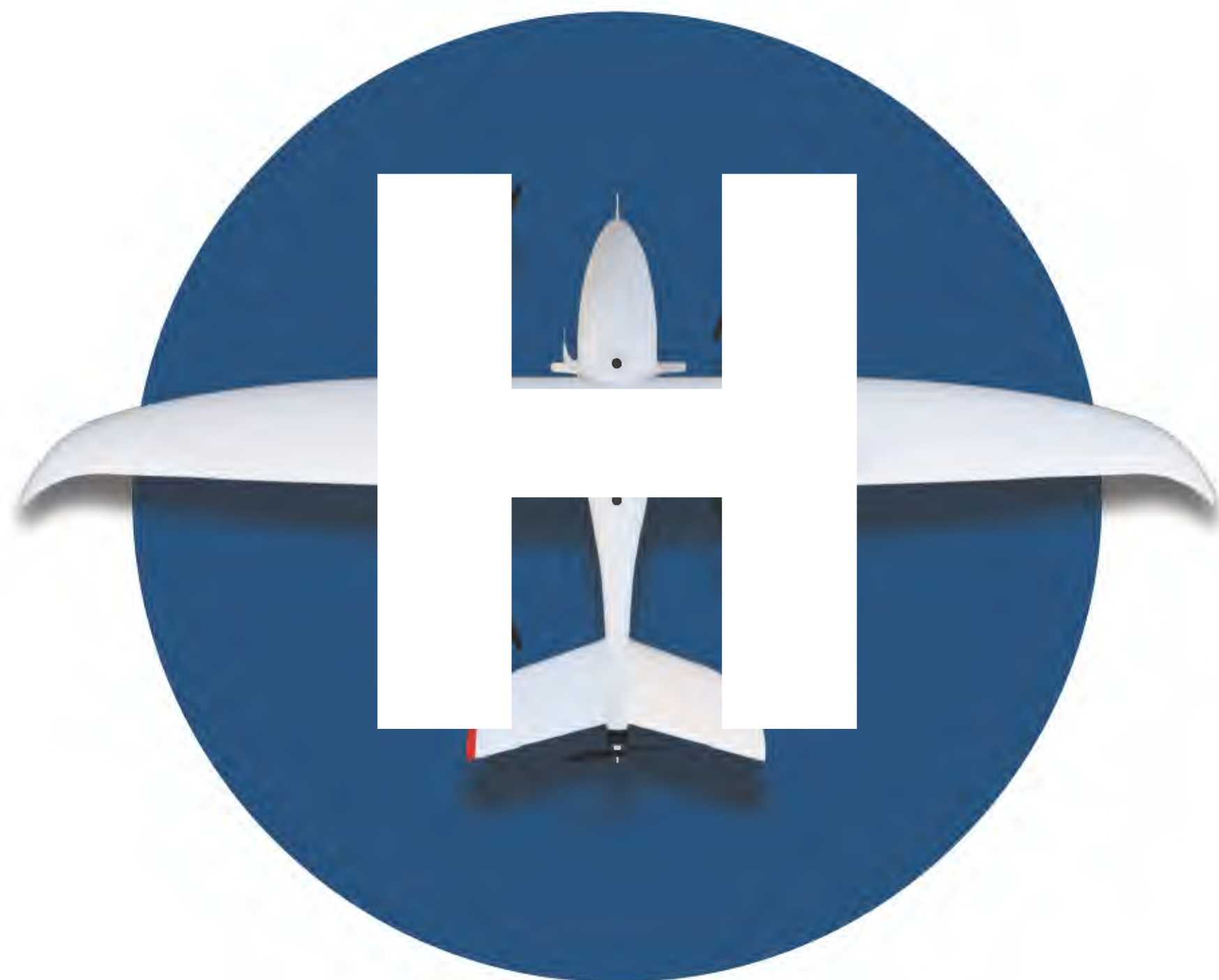
 **PPK/RTK**
Improve absolute accuracy
in fewer steps

 **< 5 min**
Quick assembly

 **5G**
5G & Cloud
connectivity

 **Auto
MISSION**
Take-off, landing & smart
autonomous features





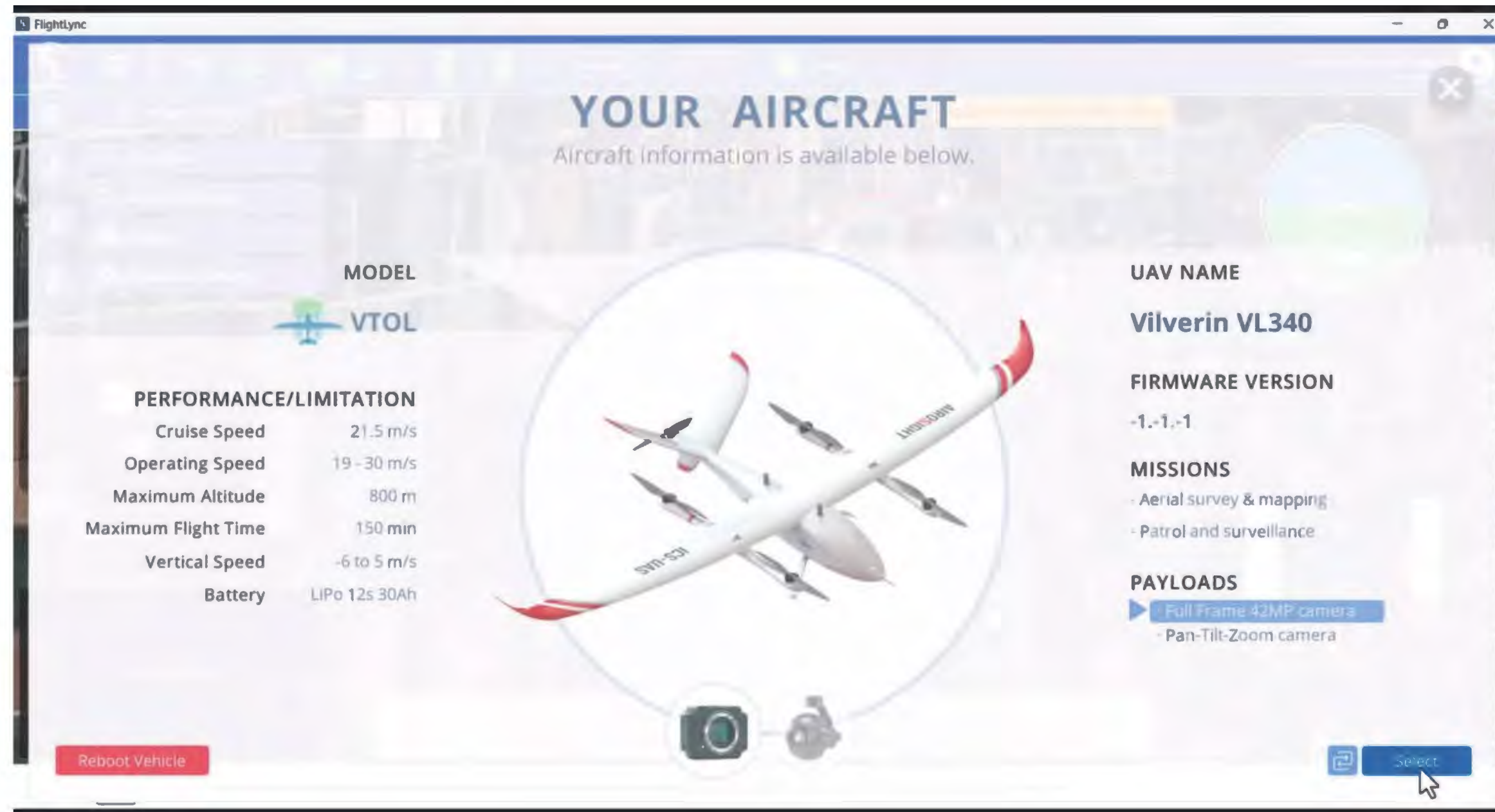
EASE OF USE

FLEXIBILITY

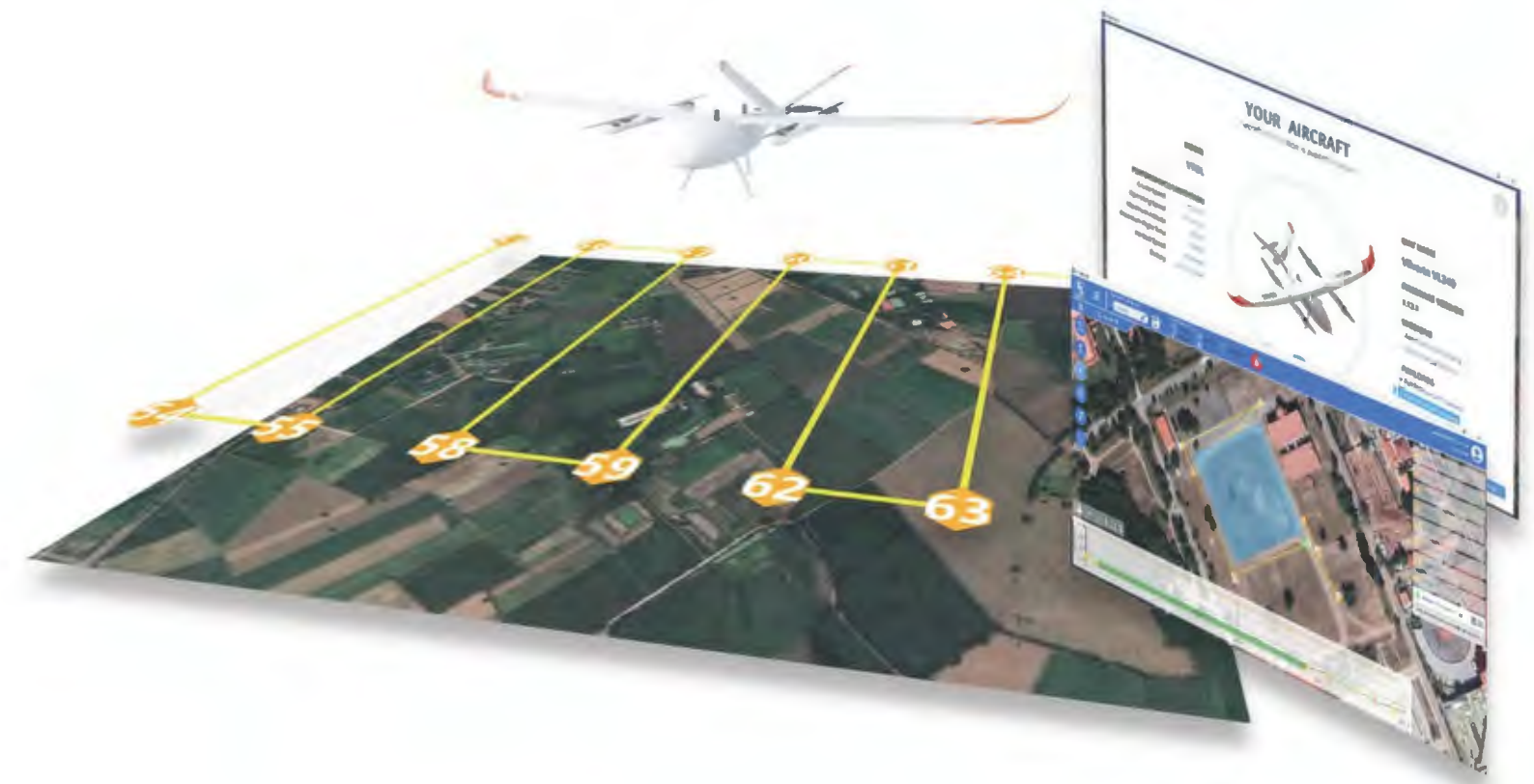
RELIABILITY

MAINTENABILITY

EASE OF USE



A vertical takeoff and landing (VTOL) aircraft that requires no runway, featuring fully autonomous flight from takeoff to landing. It is controlled via the "FlightLync" installed in our Ground Control Software, designed with user-friendliness in mind and continuously improved based on user feedback.



Features

- Flight Path Planning
- Flight Data Monitoring
- Pre-flight Check Systems

- Realtime Video
- Vehicle Setup
- Autopilot Support





User Log in

Enter your email and password
to get sign in to your account

Password



[Forget password?](#)

FlightLync Ground Control Software | by iCreativeSystems

User Log In

FLEXIBILITY



Supports a wide range of payload and can be upgraded to suit customer needs, including RGB cameras, multispectral sensors, EO/IR systems, and LiDAR.

SURVEILLANCE



EO/IR Camera



PTZ Camera

AERIAL MAPPING



LiDAR



RGB Camera

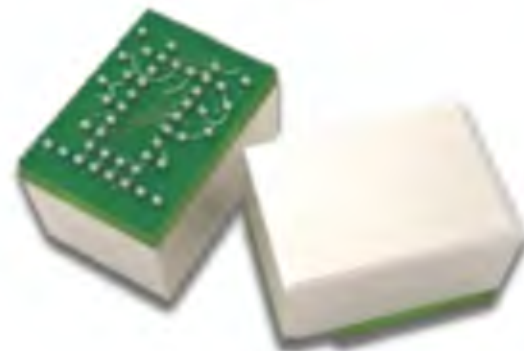


Oblique Camera



Multispectral Camera

RELIABILITY



Utilizes industrial-grade sensors and connectors, designed for Asia's environmental conditions. The UAV structure testing for durability and flexibility, along with advanced electronics testing beyond standard drone registration, such as EMI and EMC



MAINTAINABILITY



Offers a clear maintenance plan and tracking system, providing problem analysis and solutions before issues arise. Equipped with software for maintenance tracking and notifications.

ICS FLEET

Home UAV Fleet Monitoring Flight Client

Setting Administrator Profile Help & Support Sign Out

Flight

Time Frame Vehicle CSV Add Flight

Flight Date	Vehicle	Model	Software	Duration	Distance	Logs	Status
Nov 7 2023 8:51 AM	Voxel	Voxel MX	1.14.1	2min 11s	157m		Healthy
Nov 2 2023 11:07 AM	Vilverin#1	Vilverin VL340	1.13.2dev	24min 16s	2306m		Healthy
Nov 2 2023 8:30 AM	Vilverin#1	Vilverin VL340	1.13.2dev	1h 3min	5688m		Healthy
Oct 18 2023 9:16 AM	Vilverin#1	Vilverin VL340	1.13.2dev	45min 24s	4217m		Healthy
Oct 17 2023 10:03 AM	Vilverin#1	Vilverin VL340	1.13.2dev	16min 8s	1753m		Healthy
Oct 3 2023 10:20 AM	Vertex	Vertex VL240	1.13.1dev	11min 43s	190m		Warning
Oct 3 2023 09:53 AM	Vertex	Vertex VL240	1.13.1dev	7min 23s	134m		Warning
Sep 21 2023 8:43 AM	Vilverin#2	Vilverin VL340	1.13.1	1h 18min	8405m		Healthy

1 2 3 4 5 10 >

ICS FLEET

Home UAV Fleet Monitoring Flight Client

Setting Administrator Profile Help & Support Sign Out

Vilverin#1

Model Vilverin VL340 Frame VTOL

Good

Vehicle Summary

Total flight	5	Total flight time	3h 12min	Average flight time	38min	Note
		Total Distance	15km 511m	Average distance	3km 102m	

Last Flight Summary

Flight Date	Oct 29 2023 9:36 AM	Duration	46min	Flight max Alt.	137m
		Distance	3405m	Flight max Speed	25m/s

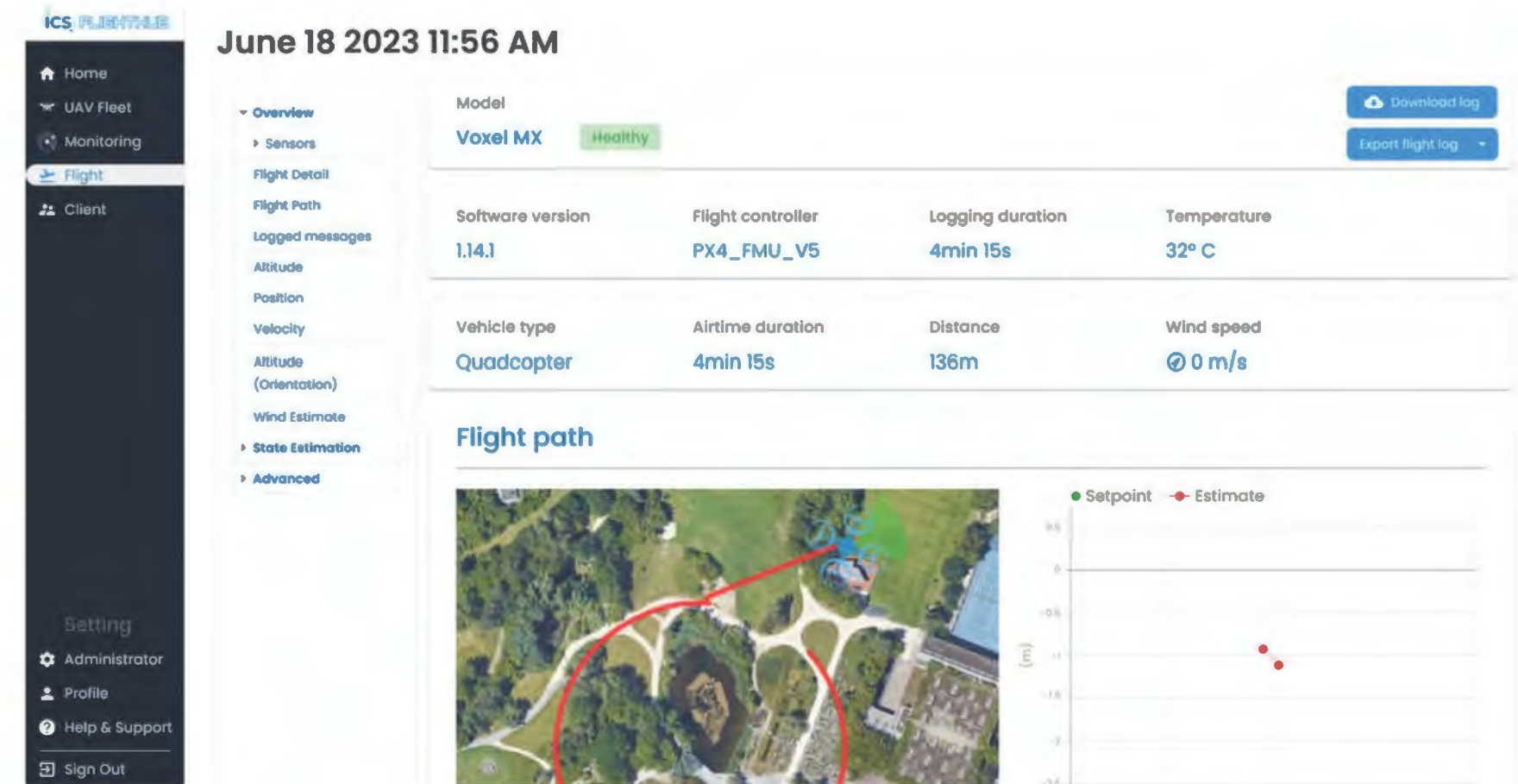
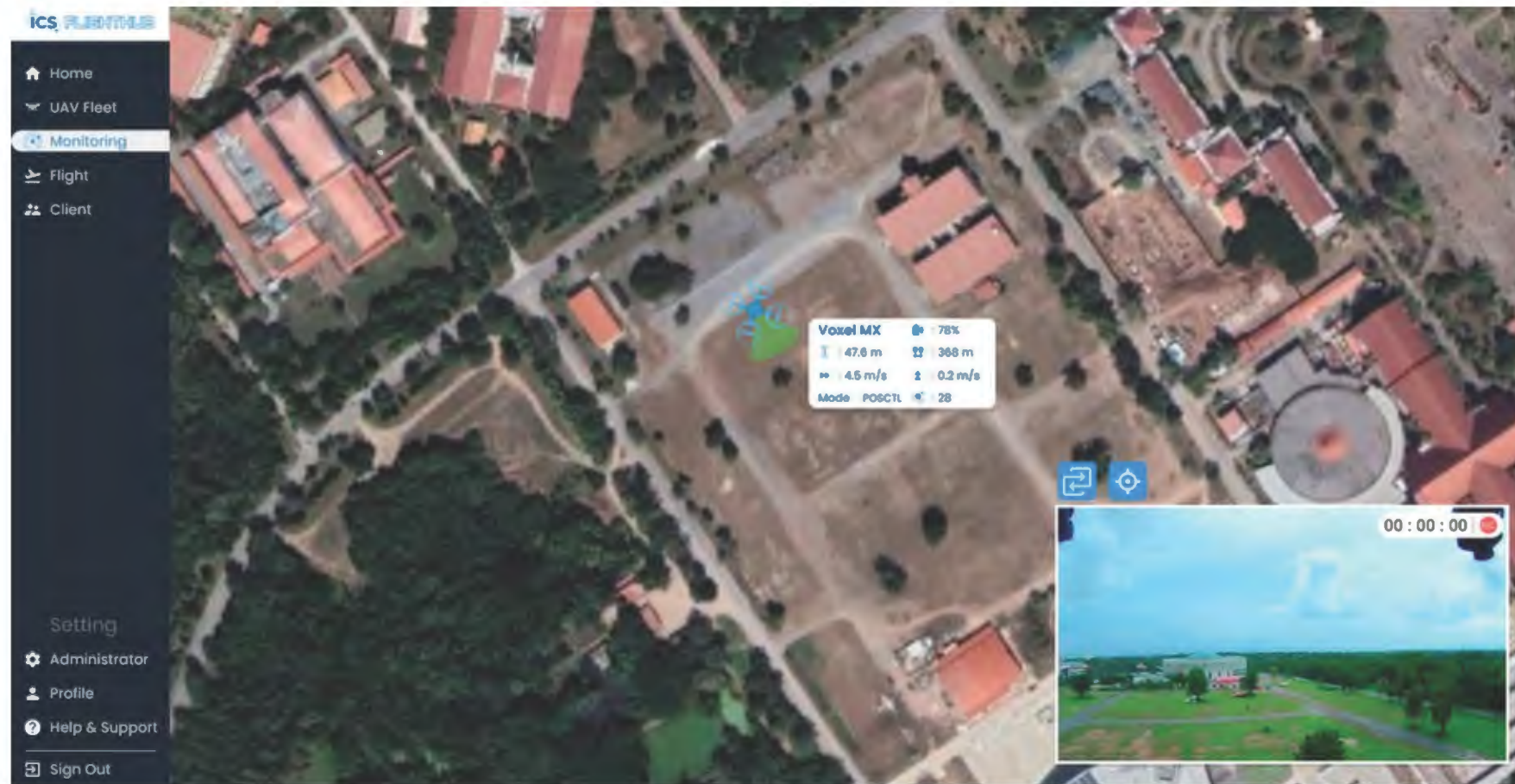
Recent Flights

Flight Date	Vehicle	Model	Duration	Distance
Oct 29 2023 9:36 AM	Vilverin#1	Vilverin VL340	46min	3405m
Oct 28 2023 10:26 AM	Vilverin#2	Vilverin VL340	7min	45m
Oct 28 2023 8:52 AM	Vilverin#3	Vilverin VL340	1h 17min	7681m

Software

FlightHub

Fleet Monitoring Software

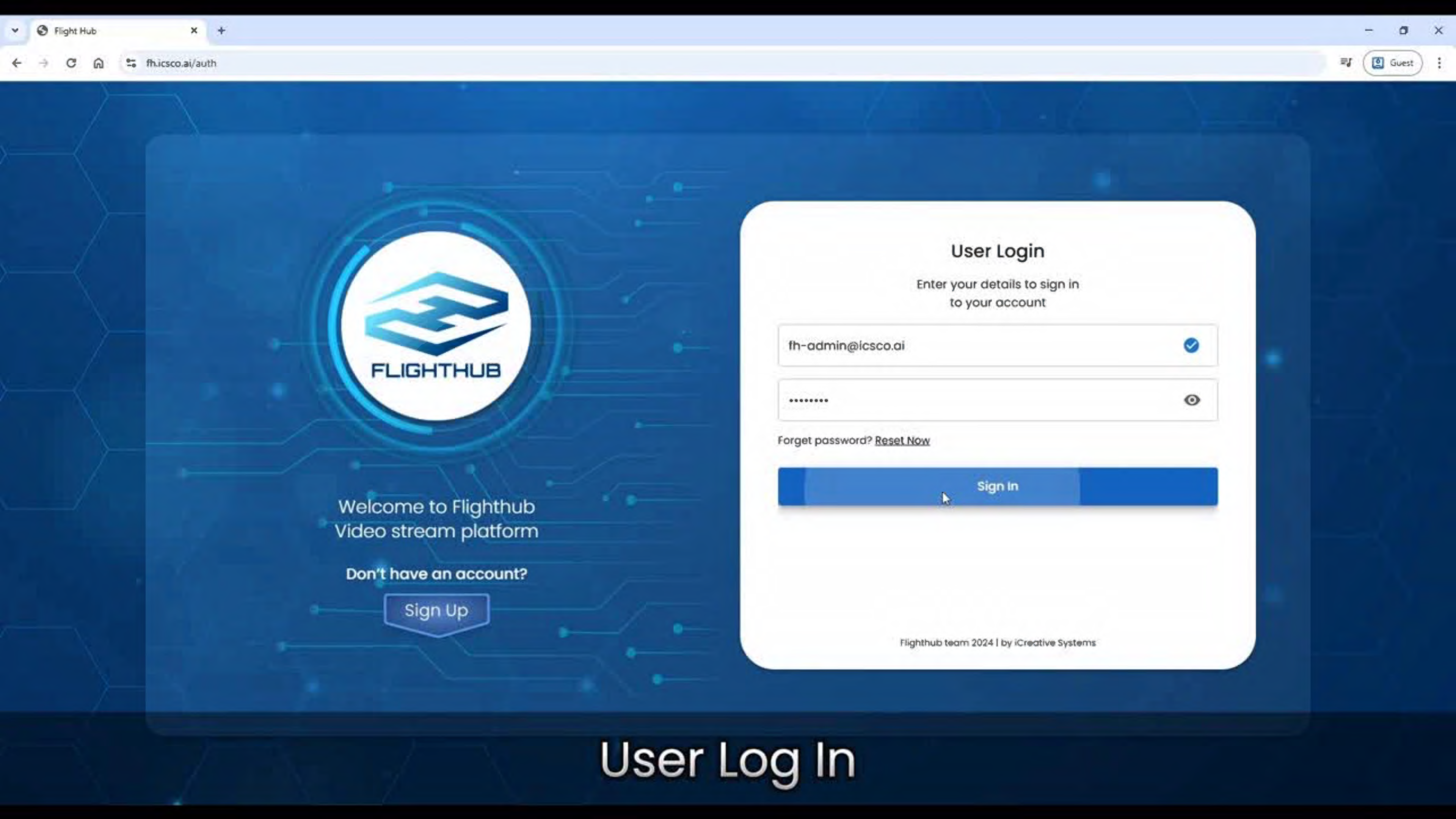


Features

- Organization Management
- Fleet Management
- Realtime Flight Monitoring

- Flight Data Overview
- Flight logs Analysis





Welcome to Flighthub
Video stream platform

Don't have an account?

Sign Up

User Login

Enter your details to sign in
to your account

fh-admin@icsco.ai



.....



Forget password? [Reset Now](#)

Sign In

Flighthub team 2024 | by iCreative Systems

User Log In

Video Real-time Streaming



Fleet Monitoring Software

The screenshot displays the FlightHub software interface. At the top, a dark navigation bar includes the "FLIGHTHUB" logo, version "0.1", and tabs for "Dashboard", "Organization", and "UAV Fleet". The user "Sirapob Kraikhorn" is logged in. The left sidebar contains a "UAV Fleet / Drone List Table" section and a "FLIGHTHUB" menu with "Dashboard" and "Monitoring" options. The main area features a satellite map of a rural landscape with a red and yellow drone icon labeled "Vilverin VL340". A live video feed in the bottom-left corner shows a ground-level view of a field. A data overlay at the bottom right of the map displays flight metrics: Position (-0.10 m, 130.00 m, 0.00 m/s, 0.00 m/s), Battery (91%), and Altitude (30 m). A compass indicates a heading of 241 degrees. On the right, a "Console" window shows two JSON messages from "index.tsx:117" detailing drone status, including altitude, arm state, attitude, heading, pitch, roll, flight distance, flight time, global position, latitude, longitude, GPS count, mode, remaining battery, velocity, and vertical speed.

```
63558637111"}
{"message": "index.tsx:117", "altitude": "0.0", "armState": "false", "attitude": {"heading": 241, "pitch": 1.08207399991, "roll": 1.294, "pitch": 1.08207399991, "roll": 1.294, "pitch": 1.08207399991, "roll": 1.294}, "flightDistance": "130", "flightTime": "00:03:51", "globalPos": {"lat": 14.87285423, "lon": 102.01907348632812}, "gpsCount": 30, "mode": "Position", "remainingBat": "91%", "velocity": "0.0", "verticalSpeed": "-0.0"}, {"uid": "3688537263558637111"}
{"message": "index.tsx:117", "altitude": "0.0", "armState": "false", "attitude": {"heading": 241, "pitch": 1.07252582234, "roll": 1.275, "pitch": 1.07252582234, "roll": 1.275, "pitch": 1.07252582234, "roll": 1.275}, "flightDistance": "130", "flightTime": "00:03:51", "globalPos": {"lat": 14.87285423, "lon": 102.01907348632812}, "gpsCount": 30, "mode": "Position", "remainingBat": "91%", "velocity": "0.0", "verticalSpeed": "-0.0"}, {"uid": "3688537263558637111"}
```


Standard Testing



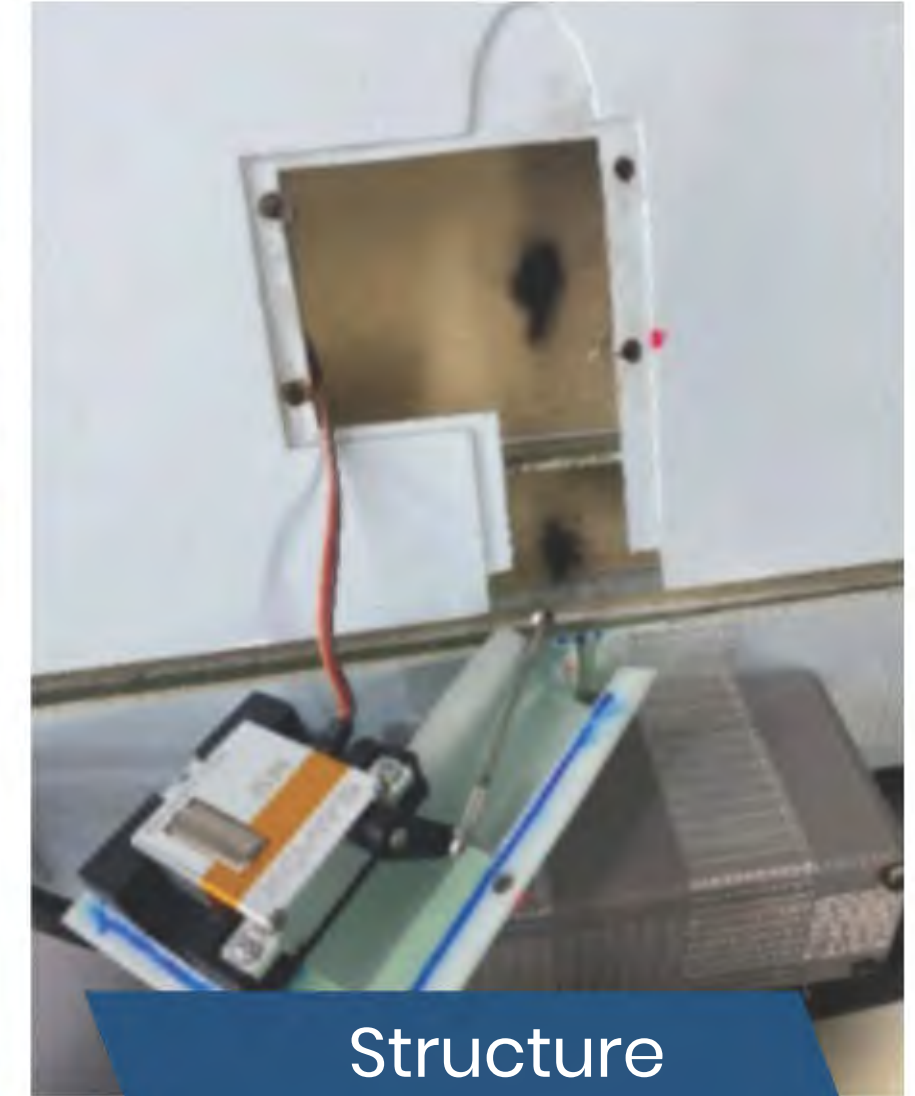
Wing
Loading Test



Radiated
Immunity Test

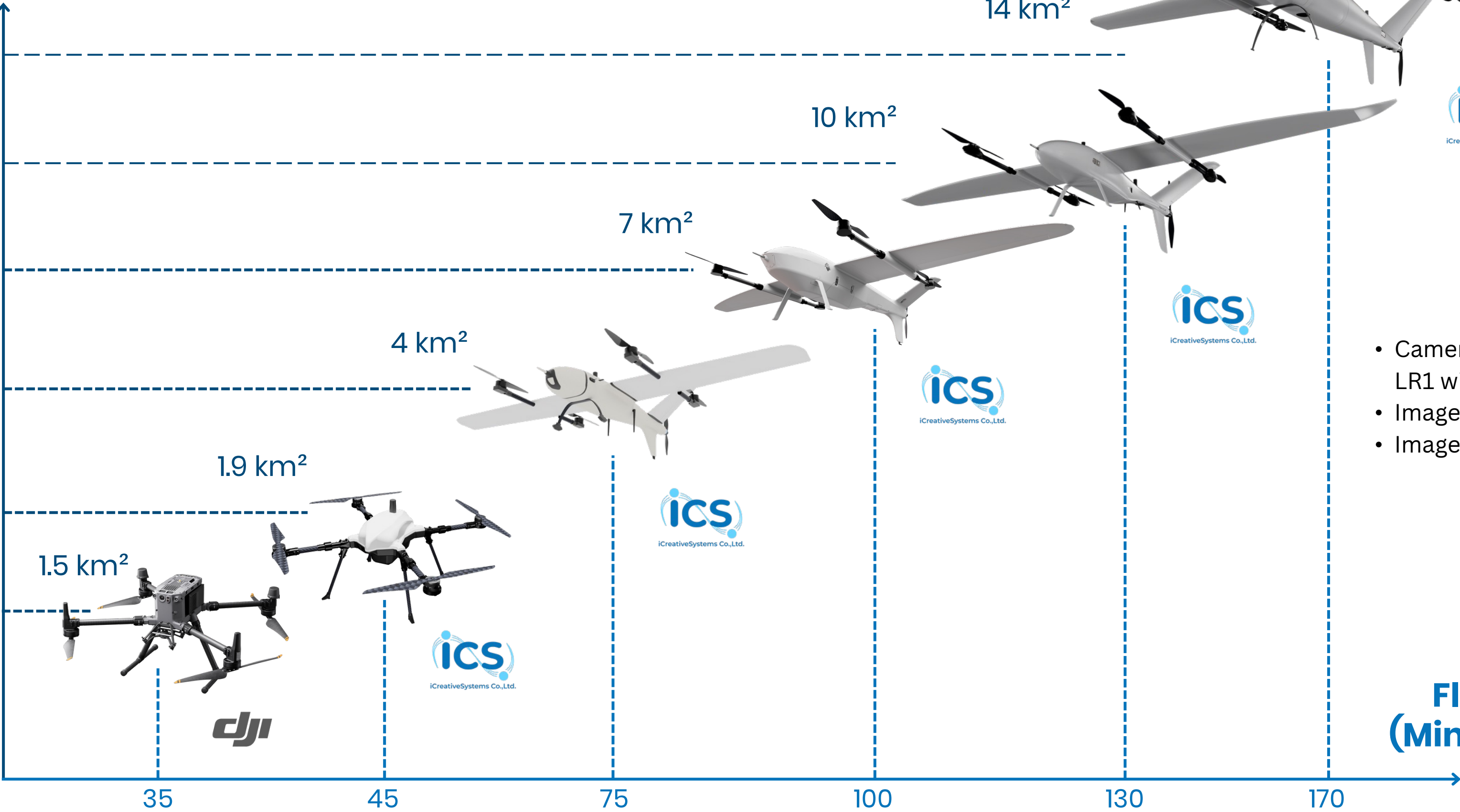


Conducted
Emission Test



Structure
Durability Test

Survey Area (km²)



- Camera model: Sony ILX LR1 with 35 mm lens
- Image Side overlap: 70%
- Image Resolution: 3 cm/px

Flight Time
(Minutes/Flight)

average coverage per flight ~70-80% of battery



 **2 kg**
Multi-purpose
payload capacity

 **3 min**
Quick assembly

 **150 km+**
Maximum travelled
distance

 **5G**
5G & Cloud
connectivity

 **PPK/RTK**
Improve absolute accuracy
in fewer steps

 **Auto
MISSION**
Take-off, landing & smart
autonomous features

VERTIX VL260

eVTOL Fixed-Wing UAV

Suitable for entry & intermediate level





University



**King Mongkut's University
of Technology
North Bangkok**



**Buriram Rajabhat
University**



**Rajamangala University
of Technology
Lanna Chiang Mai**

University



**Surindra Rajabhat
University**



**Royal Thai Air Force
Academy**



**Suranaree University of
Technology**

Government



**State Audit Office of the
Kingdom of Thailand (SAO)**



**Department of Primary
Industries and Mines (DPIM)**



**Department of Public Works and
Town & Country Planning (DPT)**



**Signal Department
Royal Thai Army**

Private Sector



EGAT

**Electricity Generating
Authority of Thailand
(EGAT)**



**GreenValley International
Inc (GVI)**



BAR 9 SE Company Limited



 **< 5 min**
Quick assembly

 **5 kg**
Swapable payload
compartment

 **PPK/RTK**
Improve absolute accuracy
in fewer steps


 **Auto
MISSION**
Take-off, landing & smart
autonomous features

XTRIX VL390

eVTOL Fixed-Wing UAV

Large area Mapping & Surveillance



 **3.5 kg**
Multi-purpose
payload capacity

 **25 km+**
Maximum travelled
distance

 **PPK/RTK**
Improve absolute accuracy
in fewer steps

 **<2 min**
Quick assembly

 **Terrain
FOLLOWING**
Maintain distance from
the ground by Terrain Following

 **Auto
MISSION**
Take-off, landing & smart
autonomous features

VOXEL MX

Multicopter UAV




Designed for LiDAR


VOXEL MX


2024





 **< 2 min**
Quick assembly

 **5 kg**
Swapable payload
compartment

 **Terrain
FOLLOWING**
Maintain distance from
the ground by Terrain Following

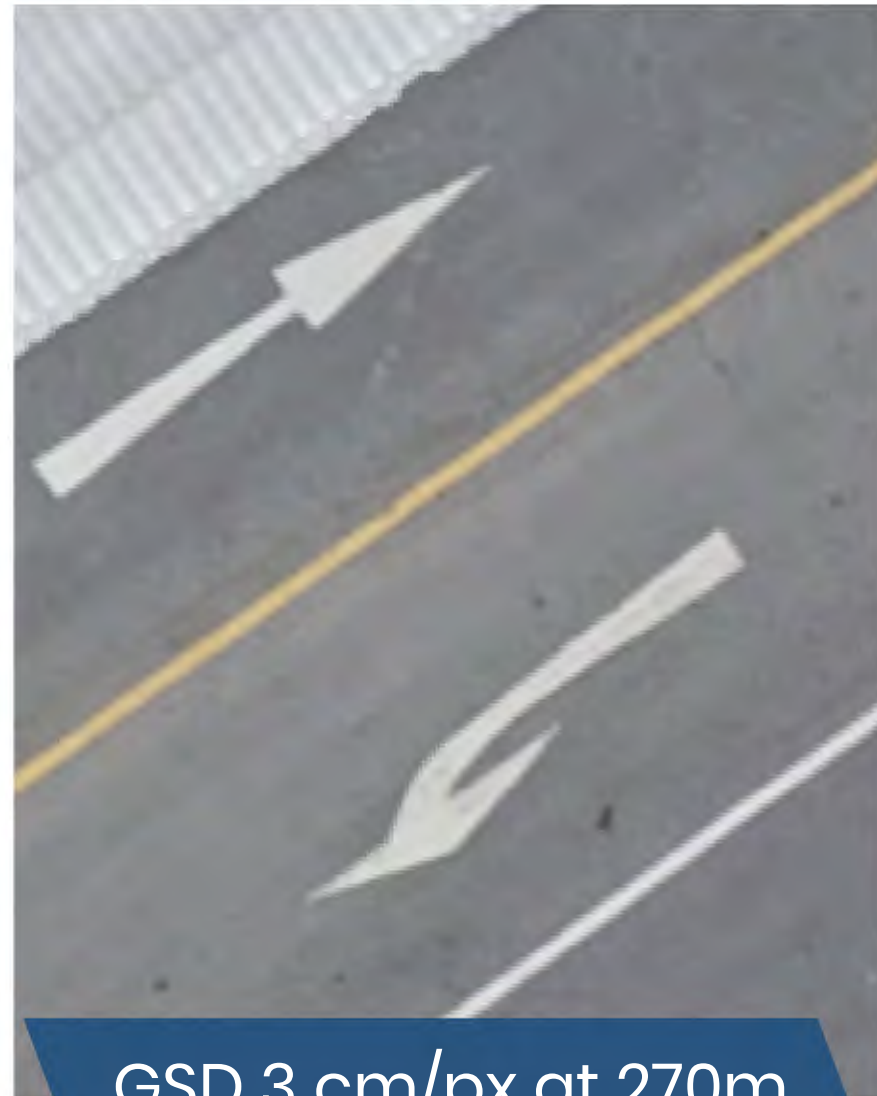
 **Auto
MISSION**
Take-off, landing & smart
autonomous features

VOXEL GS

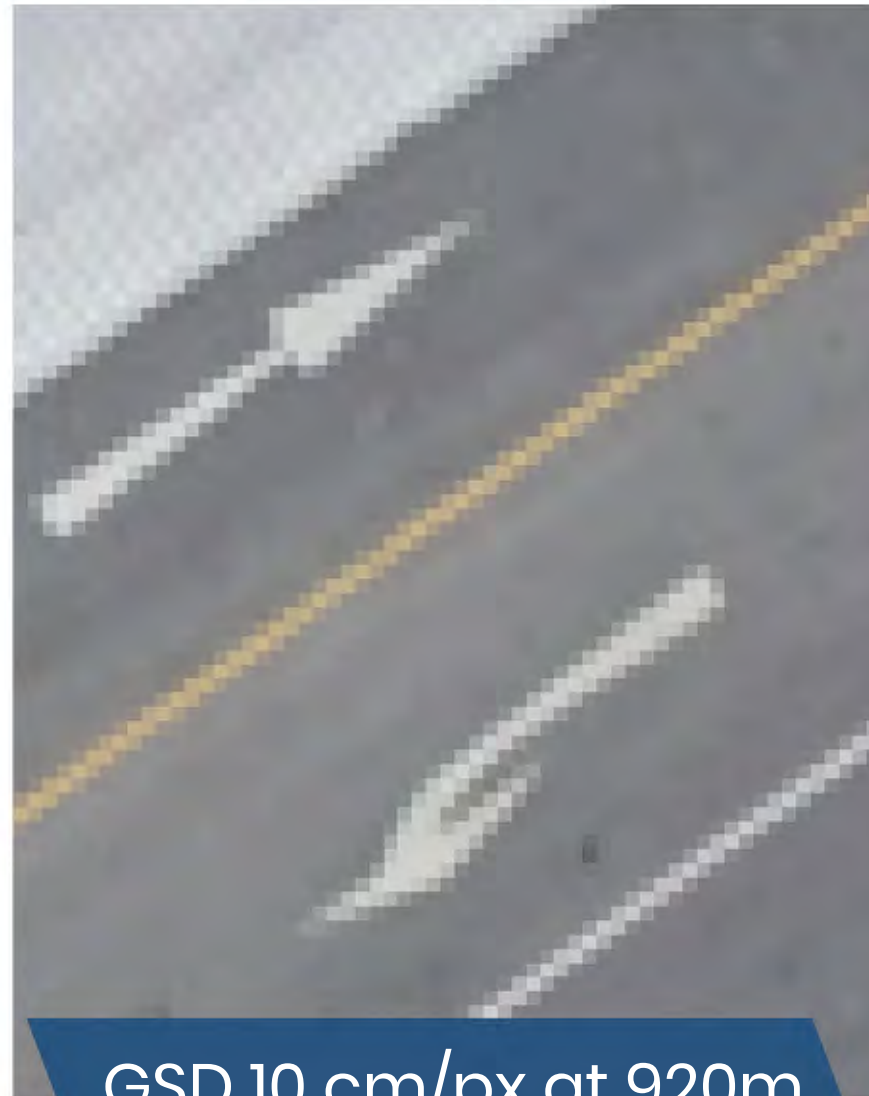
Multicopter UAV

Professional Aerial Mapping and Surveillance

Ground Sampling Distance



GSD 3 cm/px at 270m



GSD 10 cm/px at 920m



Satellite Image

**RGB Camera, LiDAR,
Contour, DSM/DTM**



RGB 3D Mapping

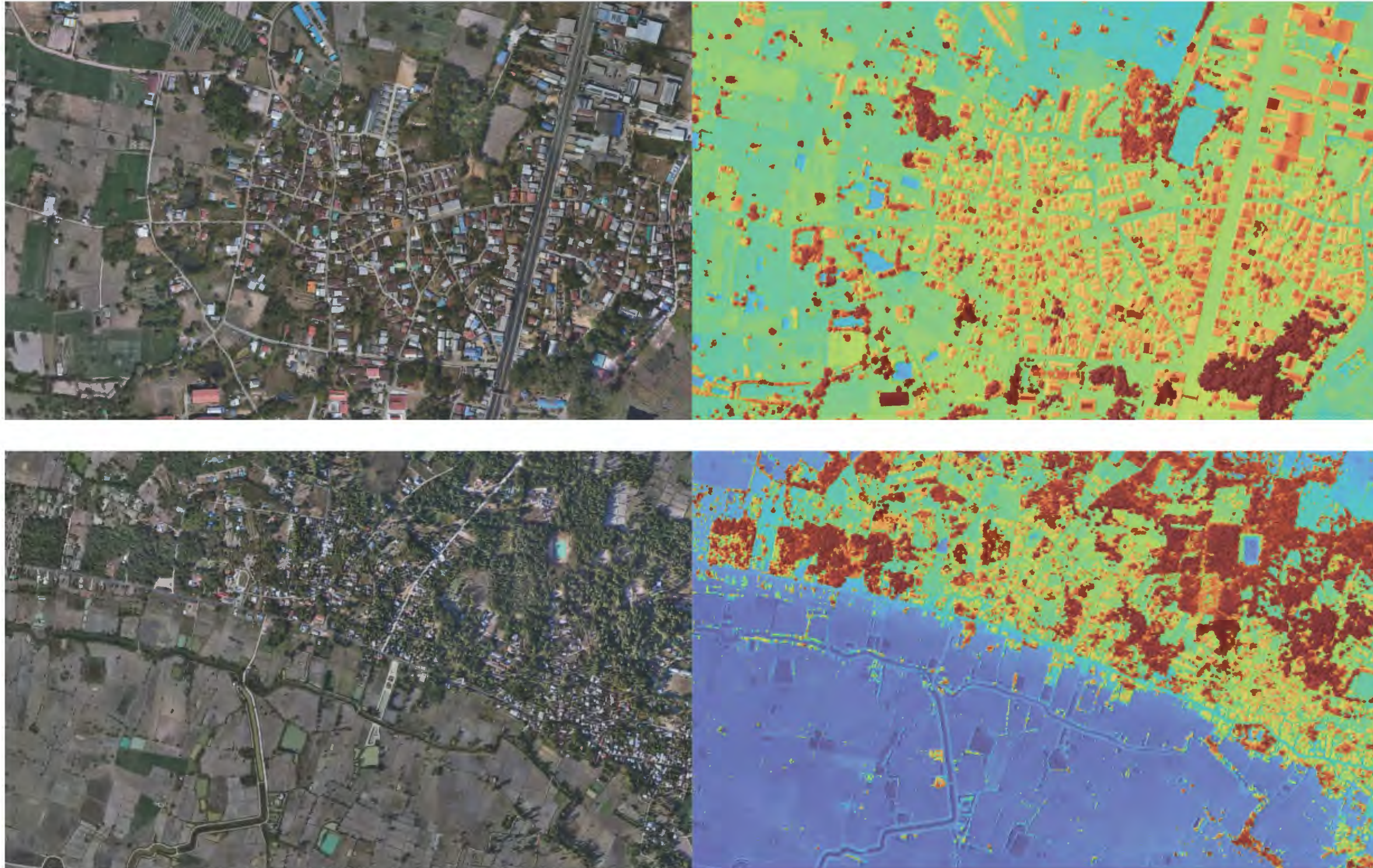


Smart City Project



RGB Mapping

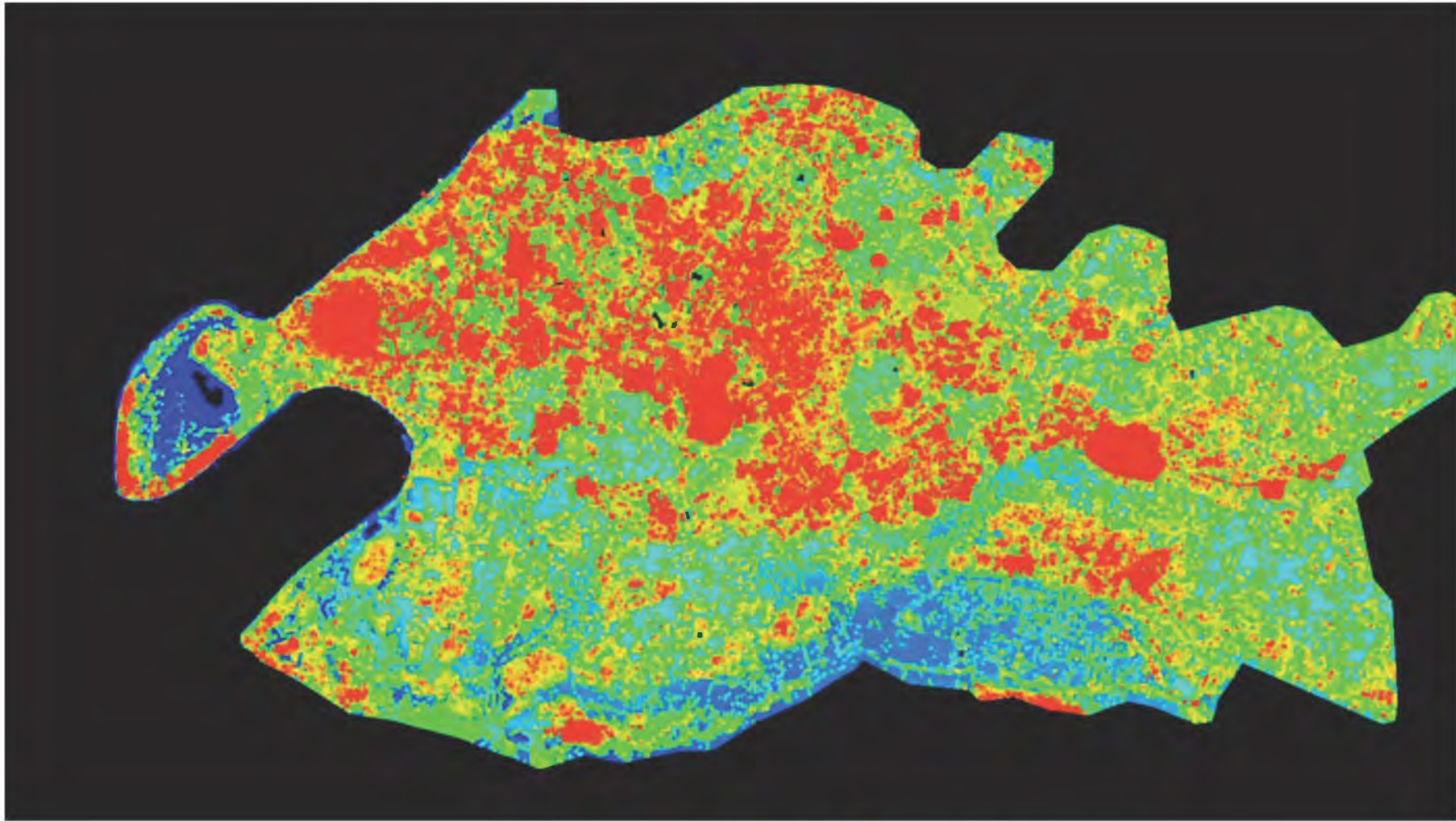
Orthomosaic



Digital Surface
Model

RGB Mapping

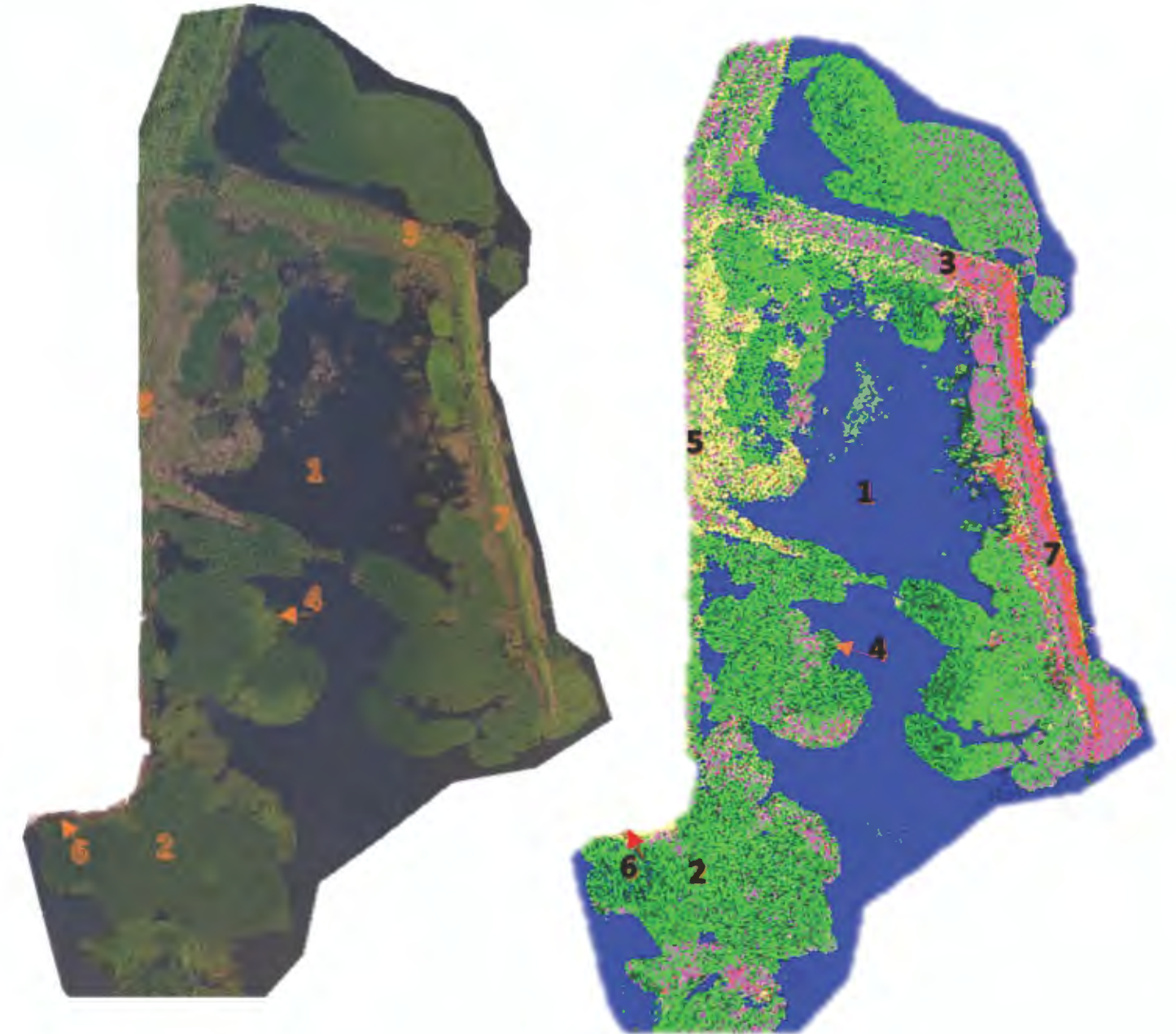
Survey area 100 km²



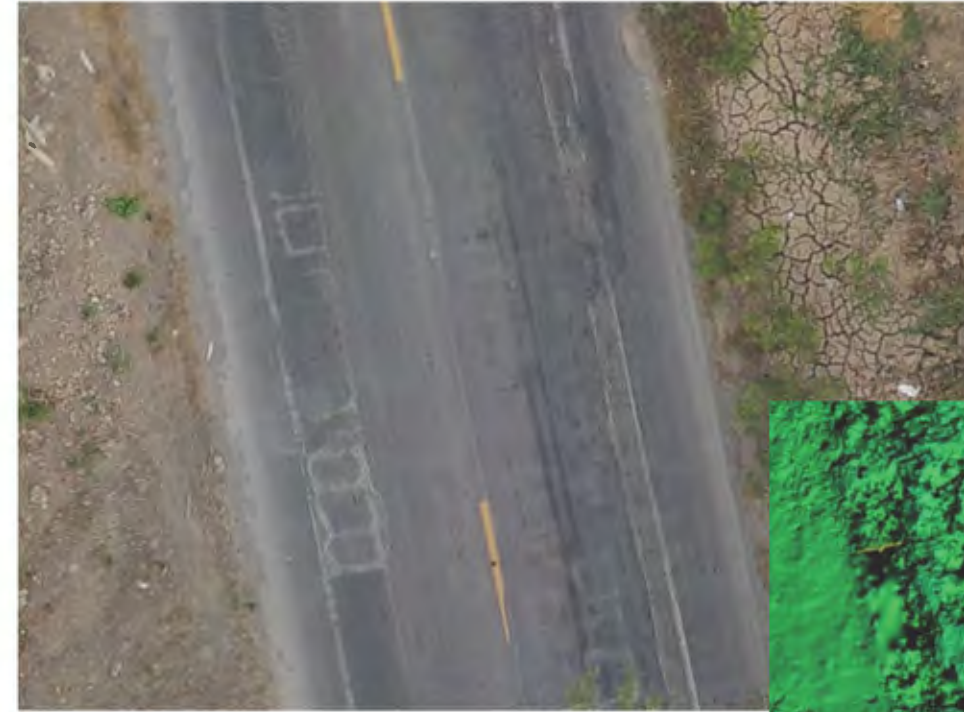


Rooftop building detection

Plant/Weed identification



Road Surface Analysis





VILVERIN VL340
FIXED-WING EVTOL



LiPix

HANDHELD
LiDAR SCANNER



Best Accuracy & Range



Indoor & Outdoor Scanner



Real-time Data Monitor



Easy Maneuver & Portability



Best Accuracy & Range



Indoor & Outdoor Scanner



Real-Time Data Monitor



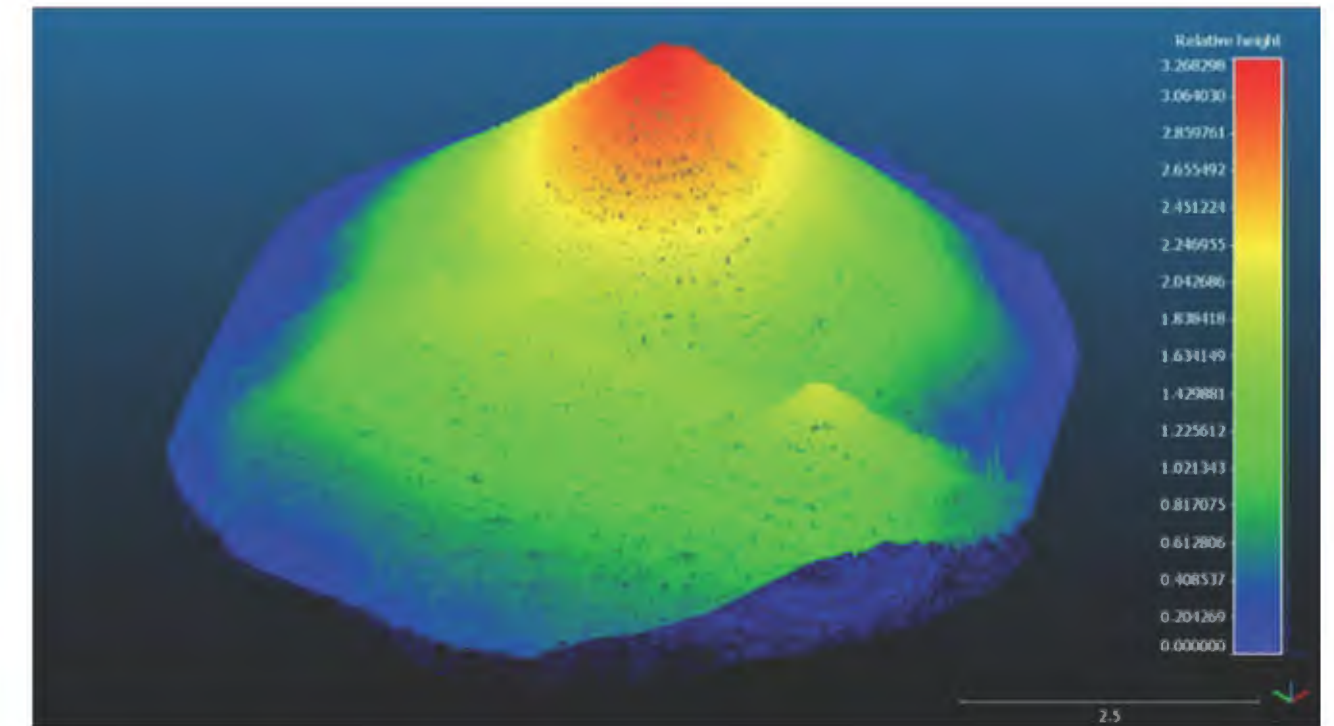
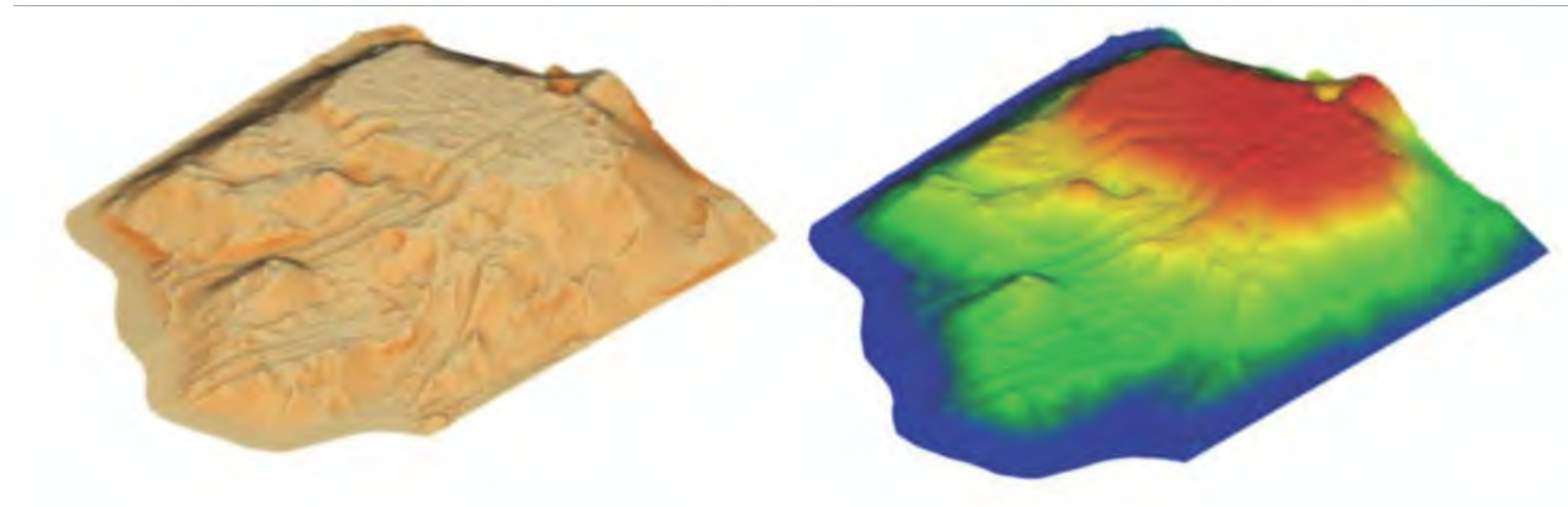
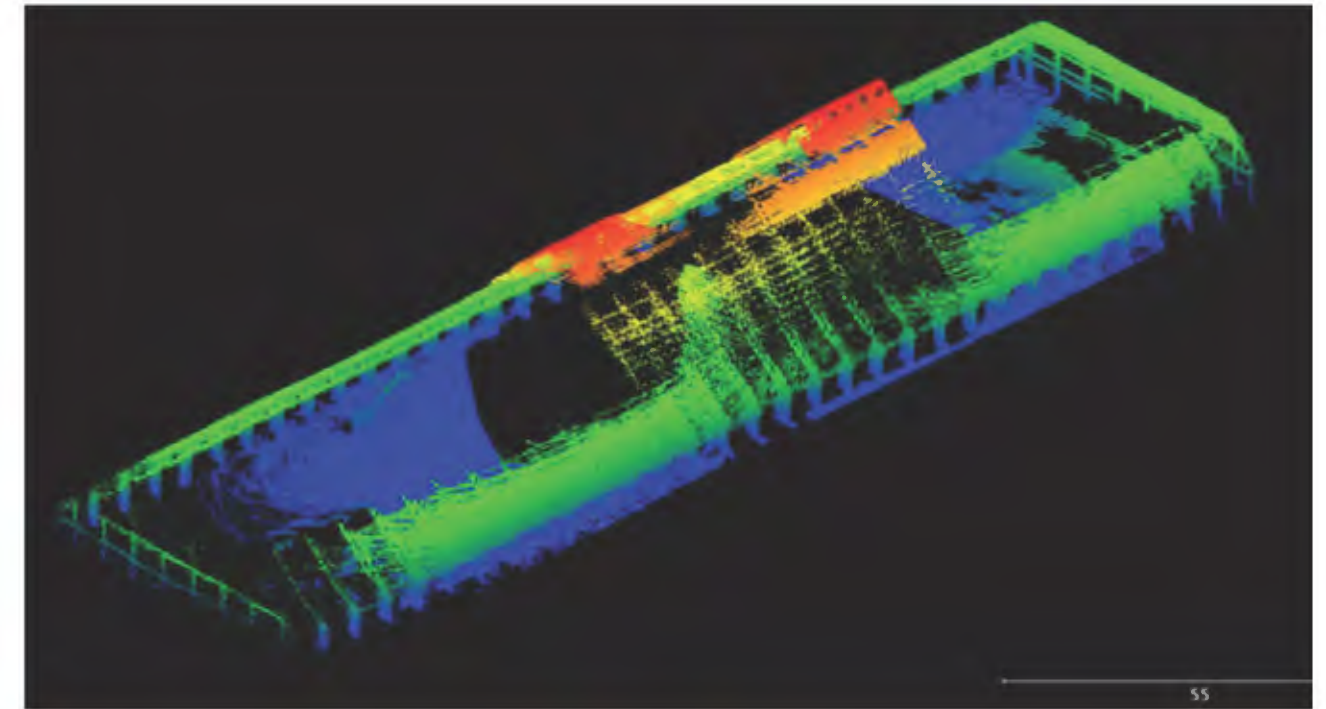
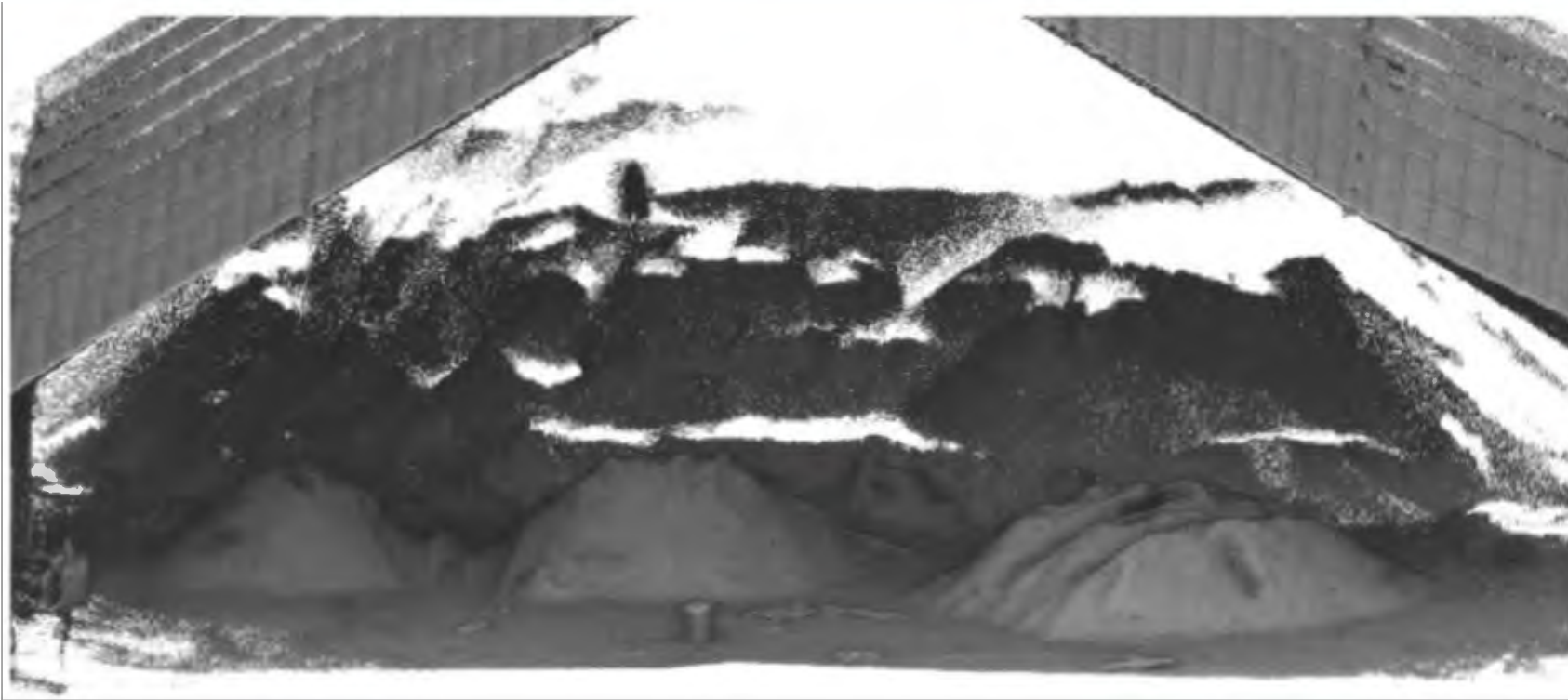
Easy Makeover & Portability

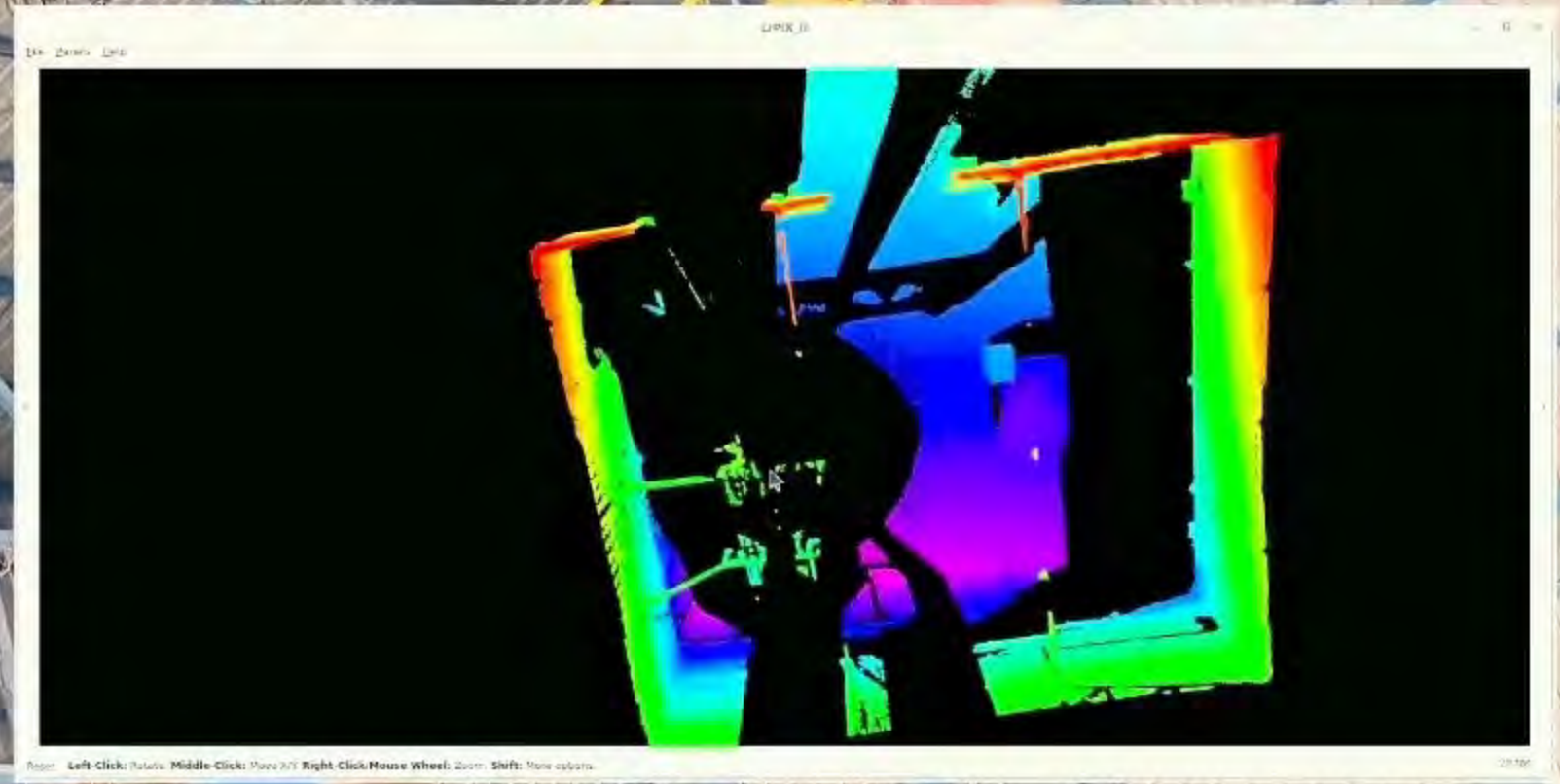
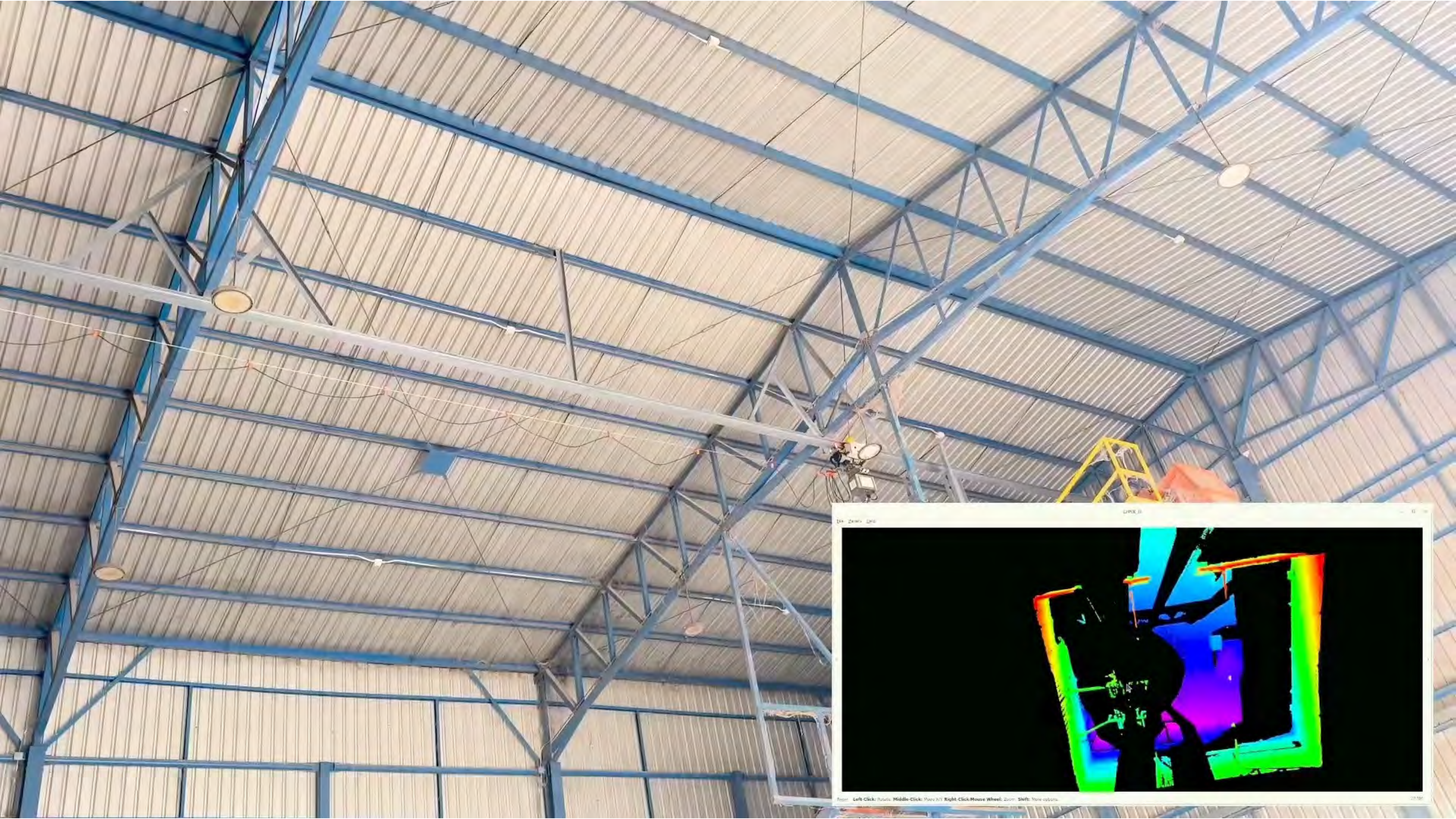
SHIELD

LIDAR SCANNER

Stock Monitoring System

Stockpile Management





Success Case



Corn cob Warehouse



Success Case



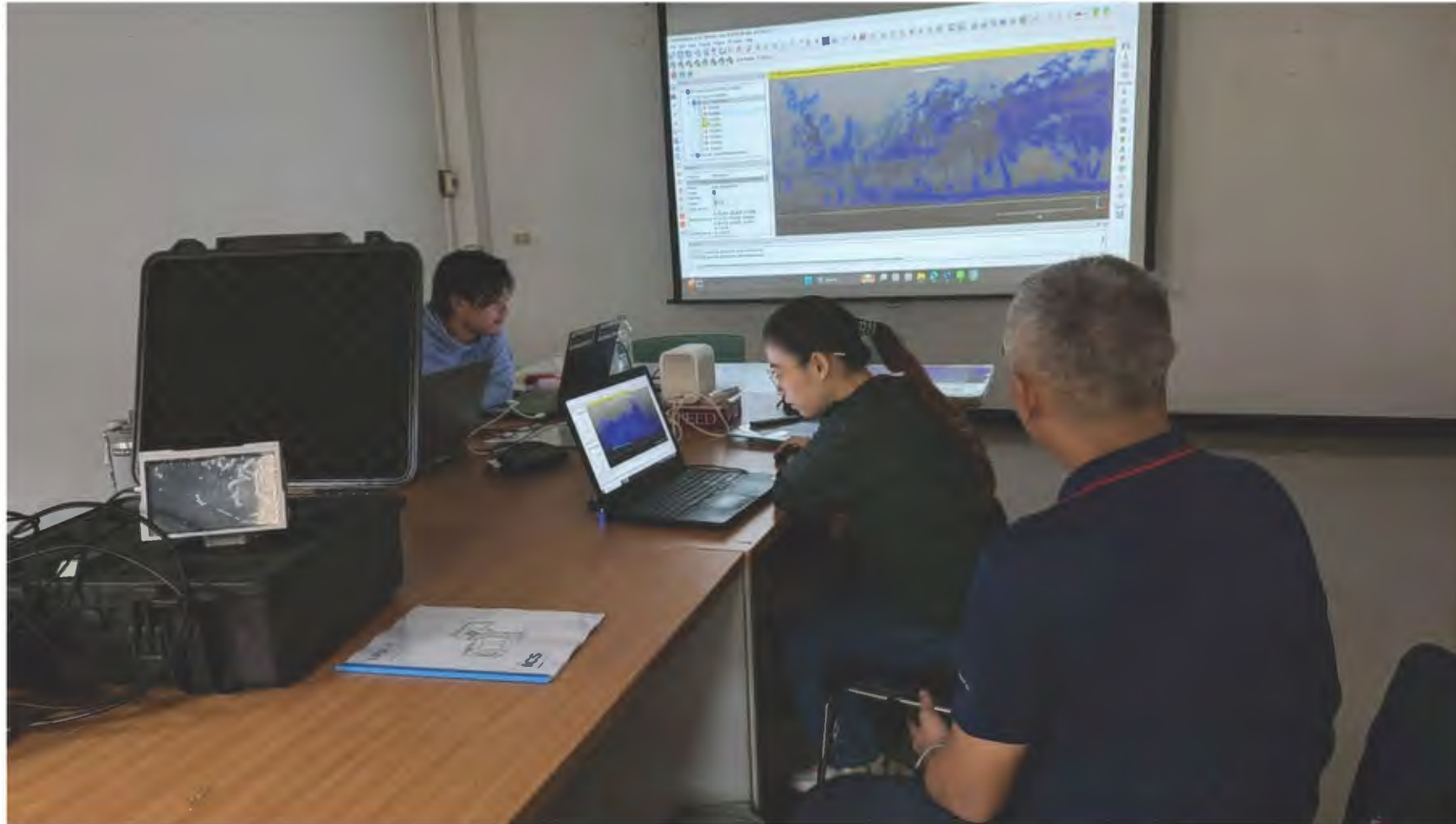
Nakhon Ratchasima
Rajabhat University



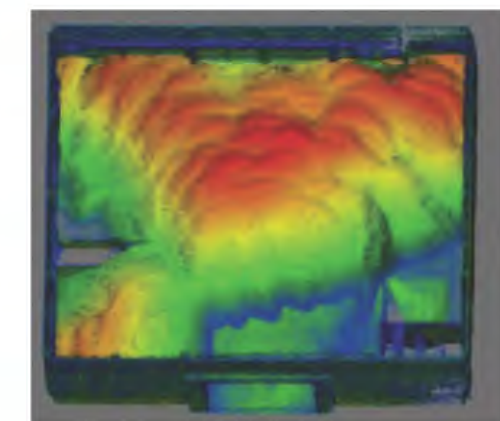
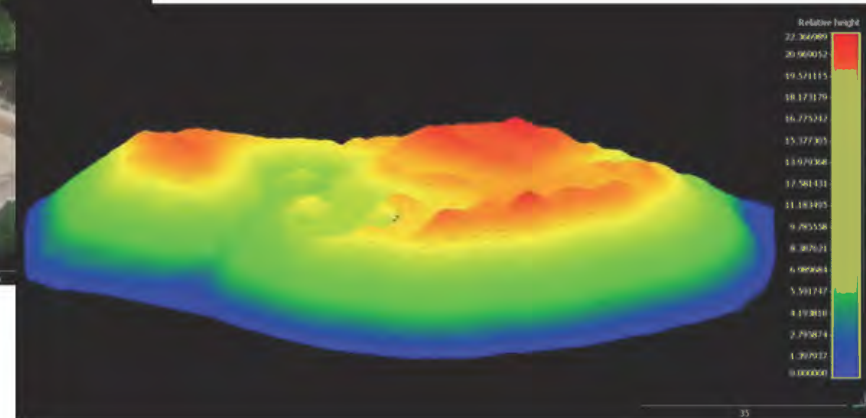
Success Case



โครงการอนุรักษ์พันธุ์กรรมอันเนื่องมาจากพระราชดำริ
สมเด็จพระเทพรัตนราชสุดาฯ สยามบรมราชกุมารี (อพ.สธ.)

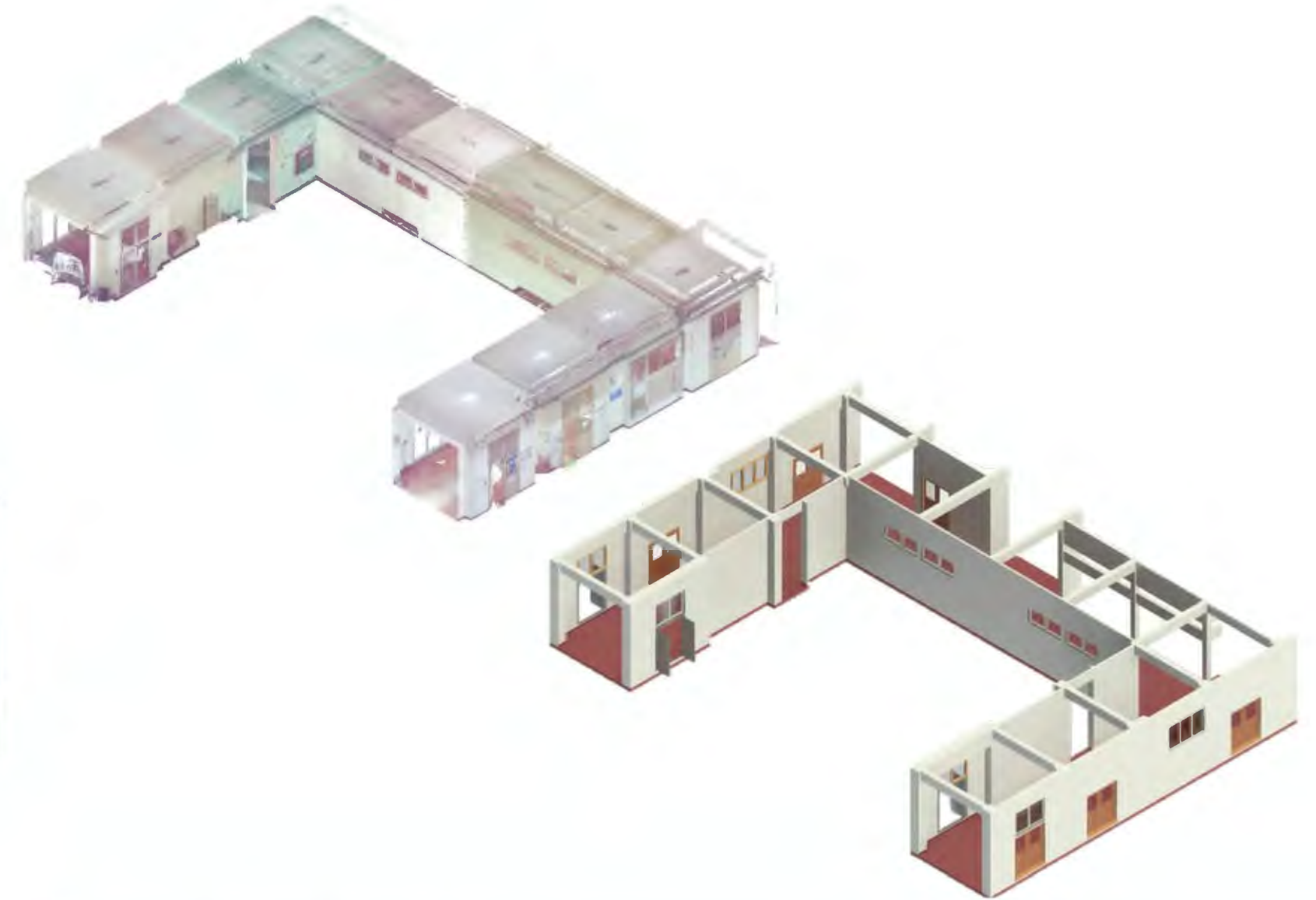
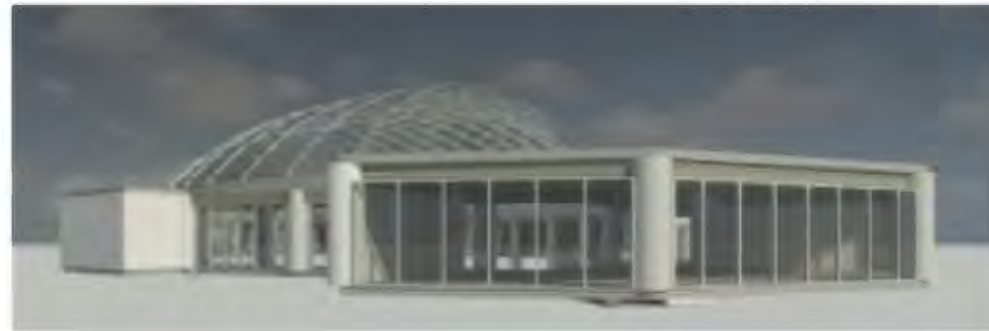
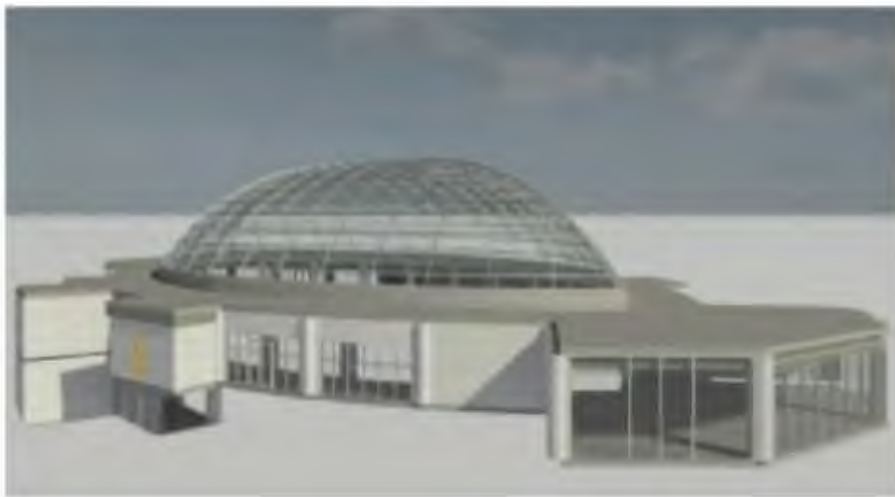


Success Case

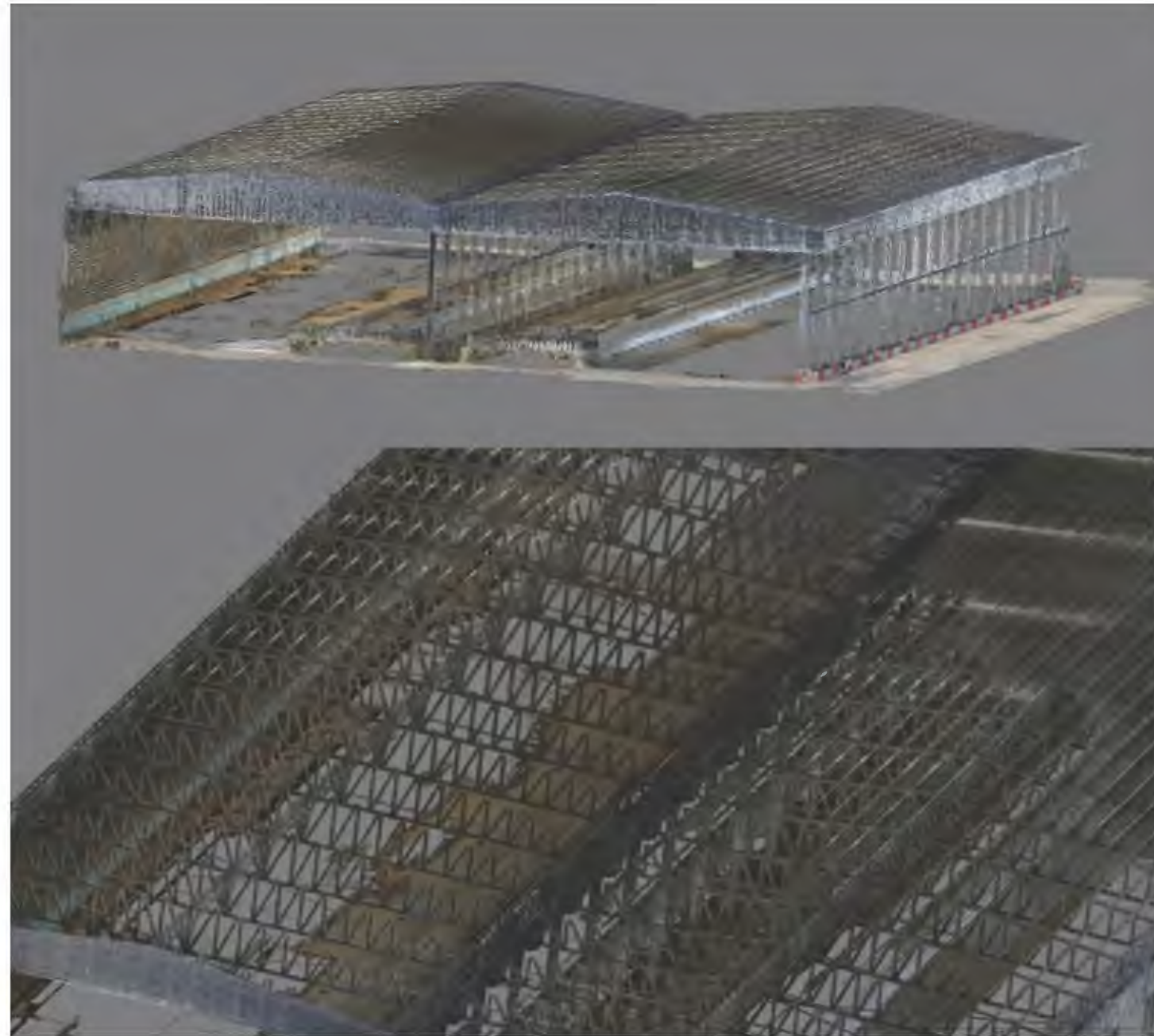


Building Information Modeling

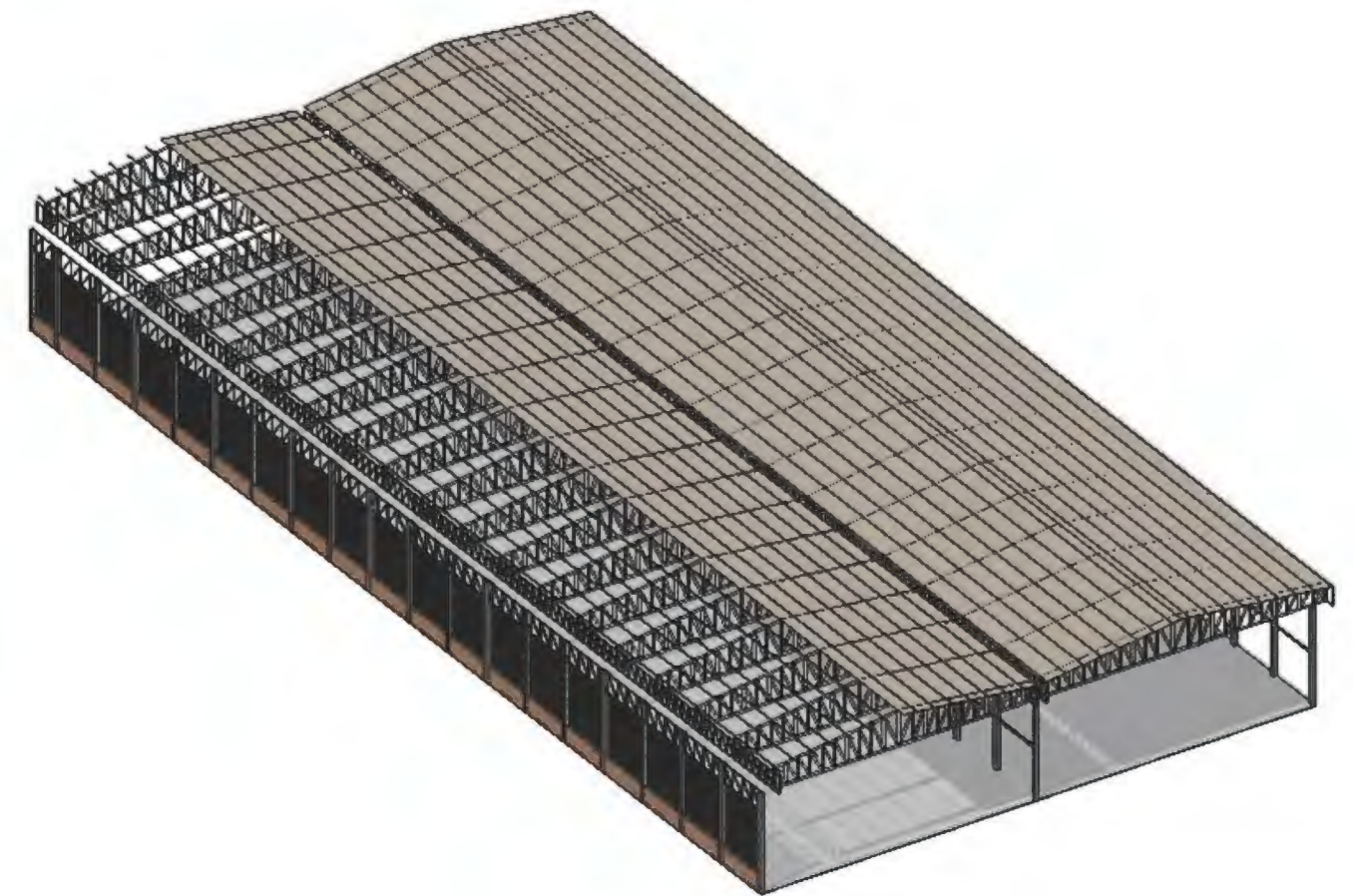
Generate floor plans from point clouds



Building Information Modeling



Scan Results from LiPix



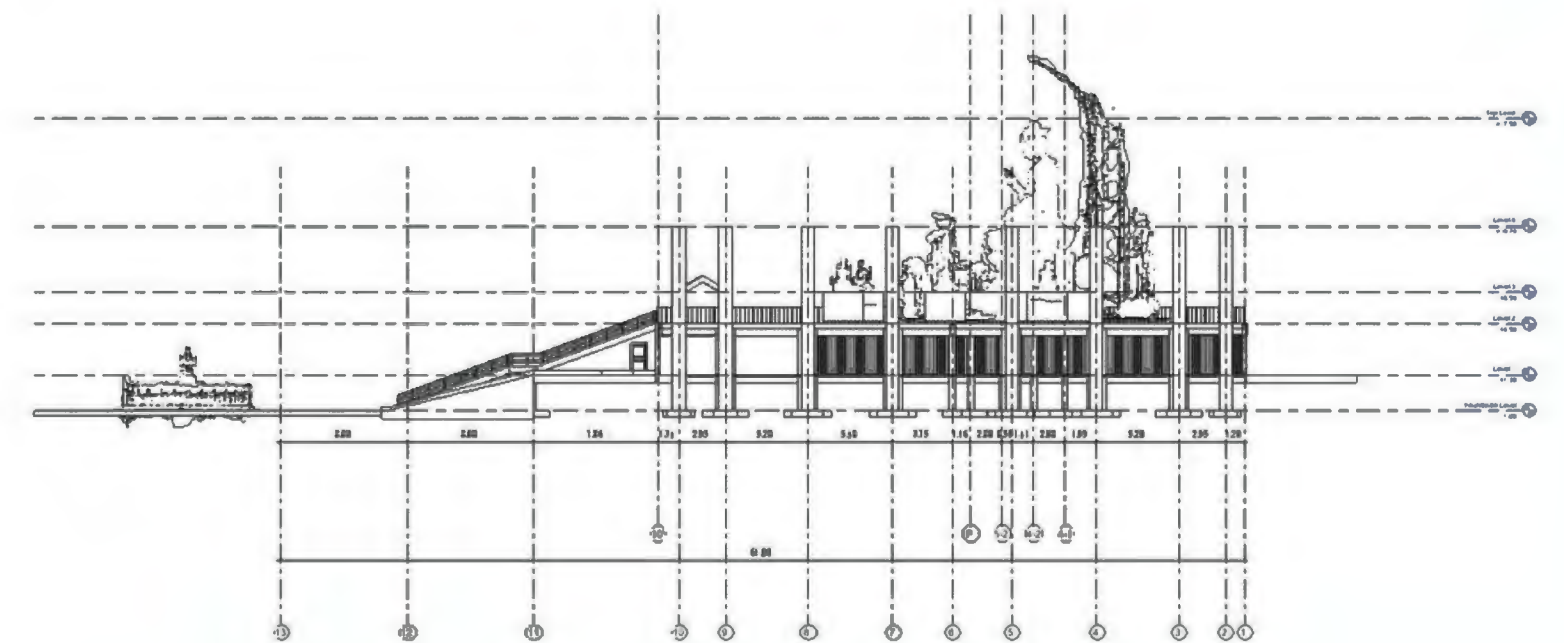
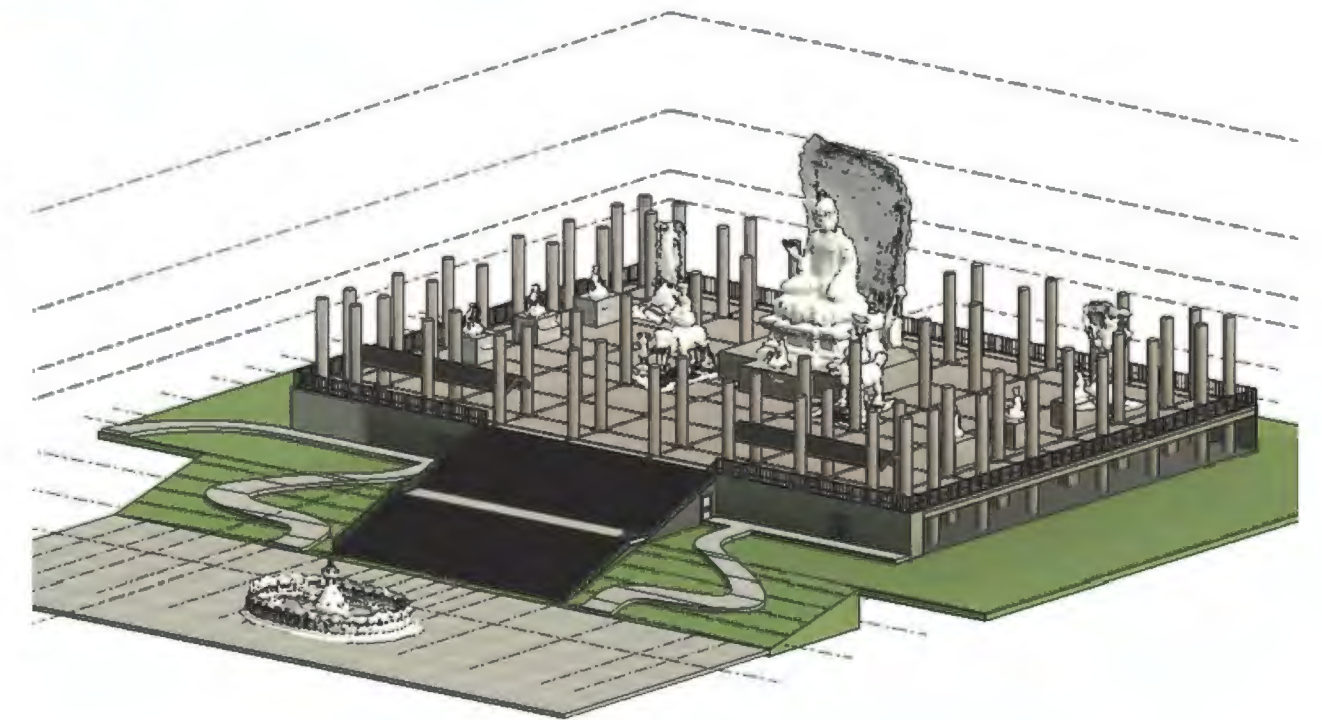
Civil CAD

3D Model Point Cloud Plan

Results

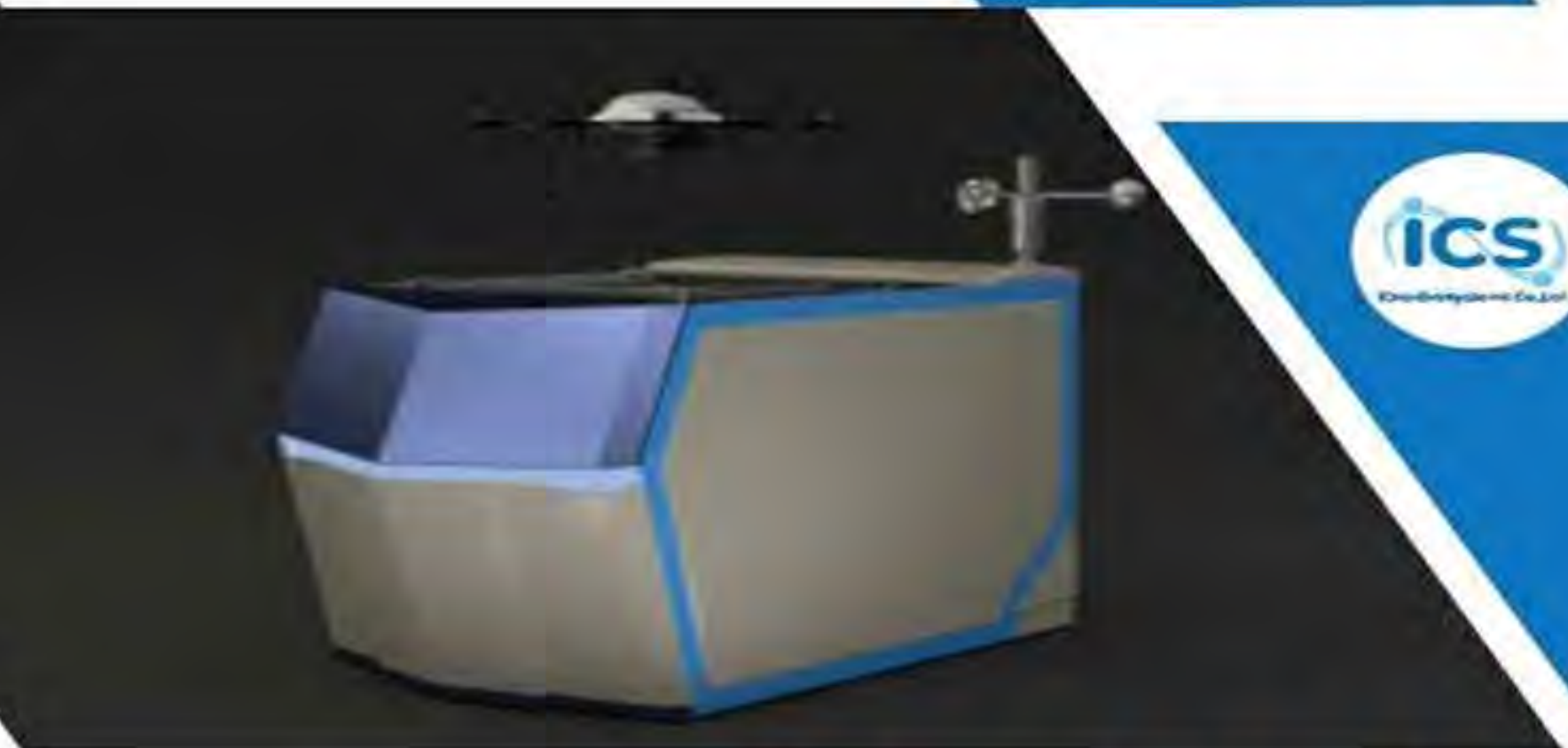


3D Point Cloud





- Site Security
- Emergency Response
- Progress Monitoring
- Asset Inspection



ICS CUBE

DOCKING STATION



iCreativeSystems Co.,Ltd.

Email : contact.icsco@gmail.com

Tel : (+66)97 078 1679

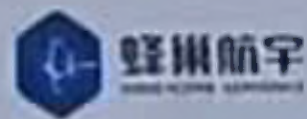
ICS CUBE DOCKING STATION

โครงการพัฒนานาสถานีচারังและเชื่อมต่อสำหรับอากาศยานไร้คนขับ





HC-UAV



叉车进入区域 FORKLIFT ENTRY AREA 叉车进入区域 FORKLIFT ENTRY AREA



We are Professional Drone Survey and Mapping

We are a young company driven to help achieving your business success. Our purpose is to analyze and take action against any problems your business encounter.



DRONTECH
ASIA 2024

DRONTECH
ASIA 2024

DRONTECH
ASIA 2024

DRONTECH
ASIA 2024

DRONTECH
ASIA 2024

DRONTECH
ASIA 2024

DRONTECH ASIA 2024



iCreativeSystems Co.,Ltd.



THIDARAT TANTRIRATN

CEO & CO-FOUNDER

