



Accelerating Fleet Electrification in Asia

eMotion Fleet Inc.





<Installed Result>

EV : 23,000

Charger : 15,000



STREETSCOOTER



B-ON

Based on experience
gained through EV

**Established
in Sep 2023**



ヤマト運輸

<Installed Result>

EV : 500

Charger : 150



Mission

By supporting
solving operational issues
to accelerate **decarbonization**
with **economical feasibility**
in **Japan** and **Asia**

SHAREHOLDERS



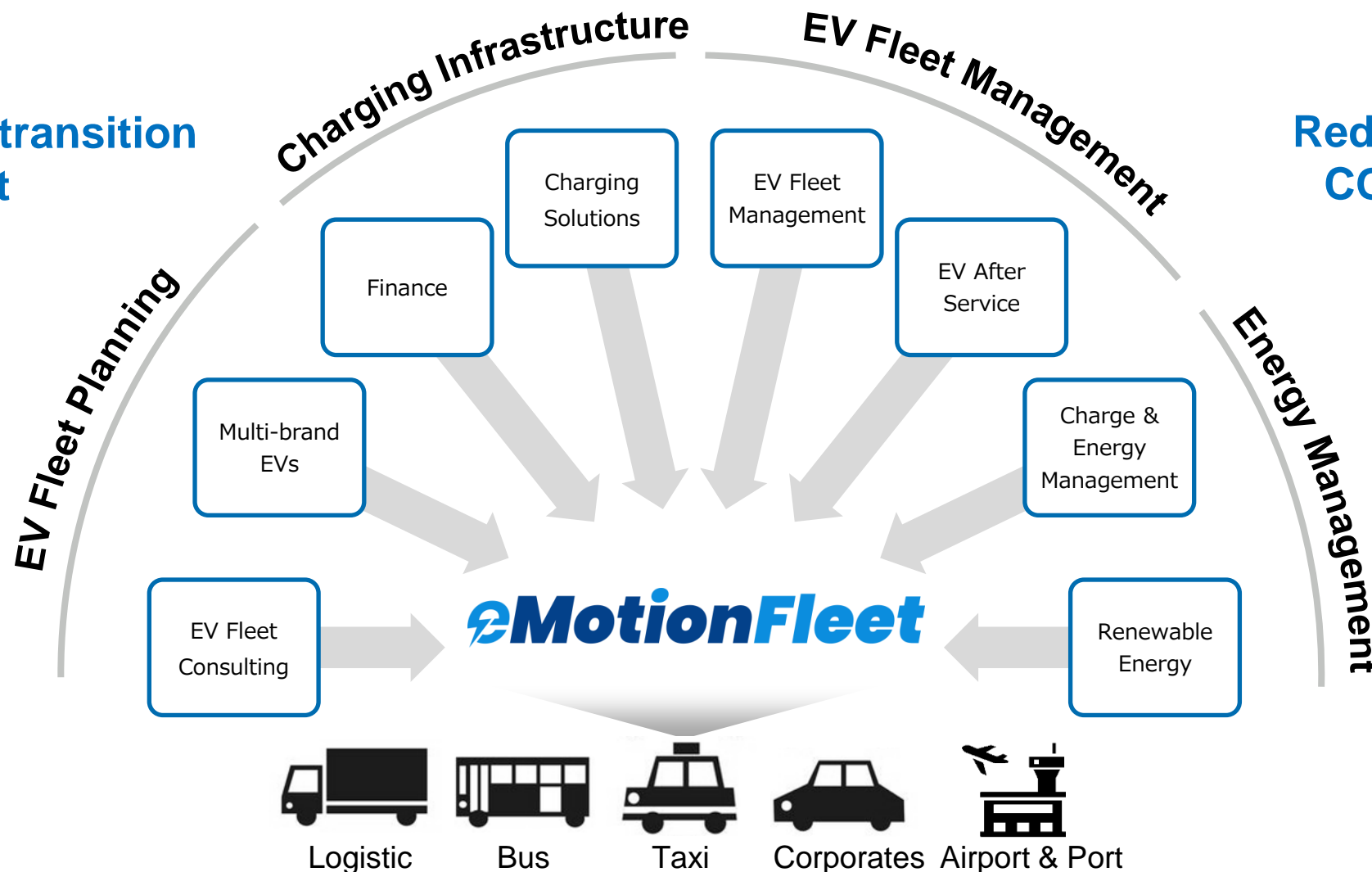
INCUBATEFUND



eMotion Fleet offers one-stop EV fleet solutions

**Seamless transition
to EV Fleet**

**Reduce TCO* &
CO2 emission**

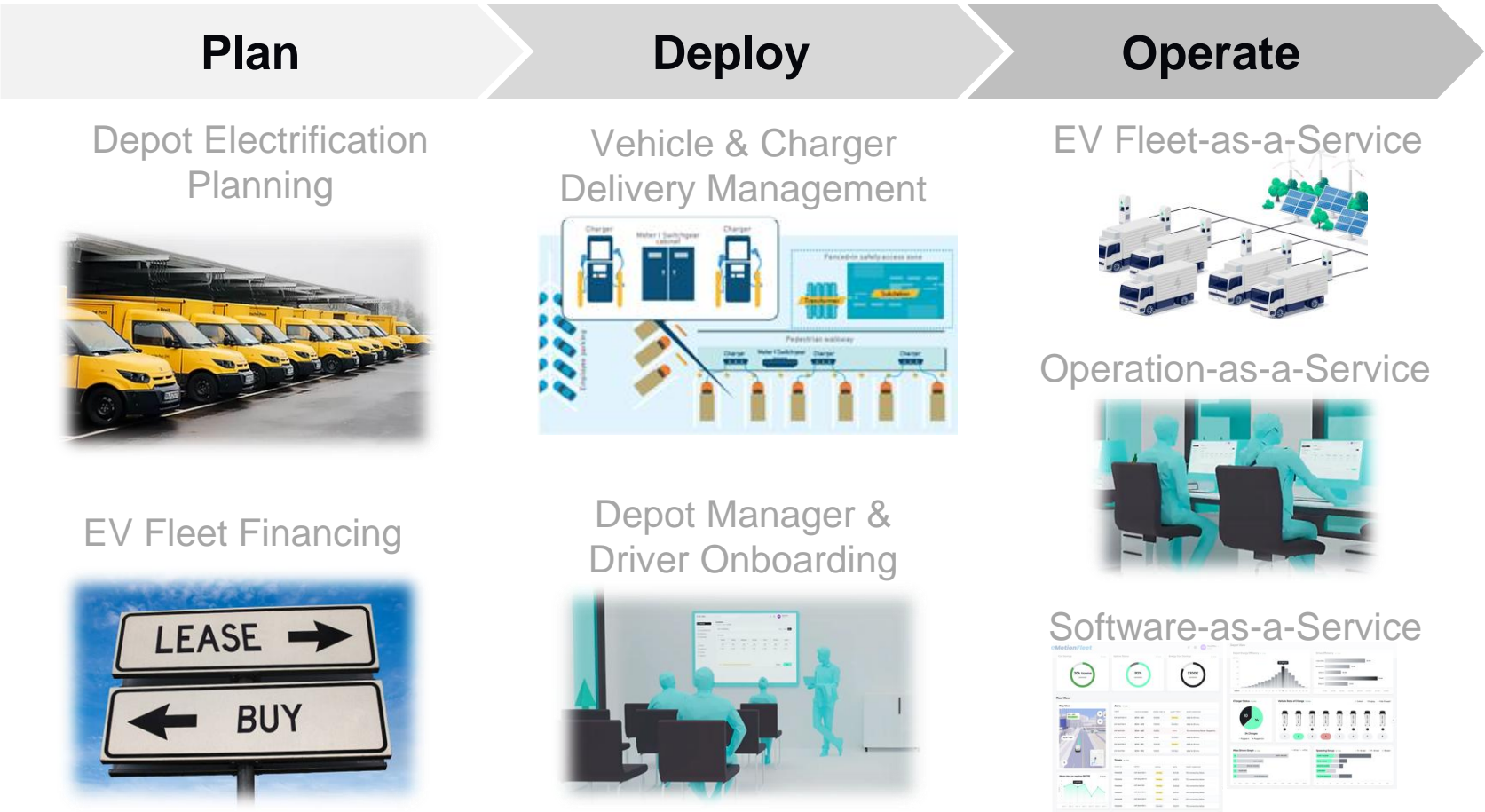
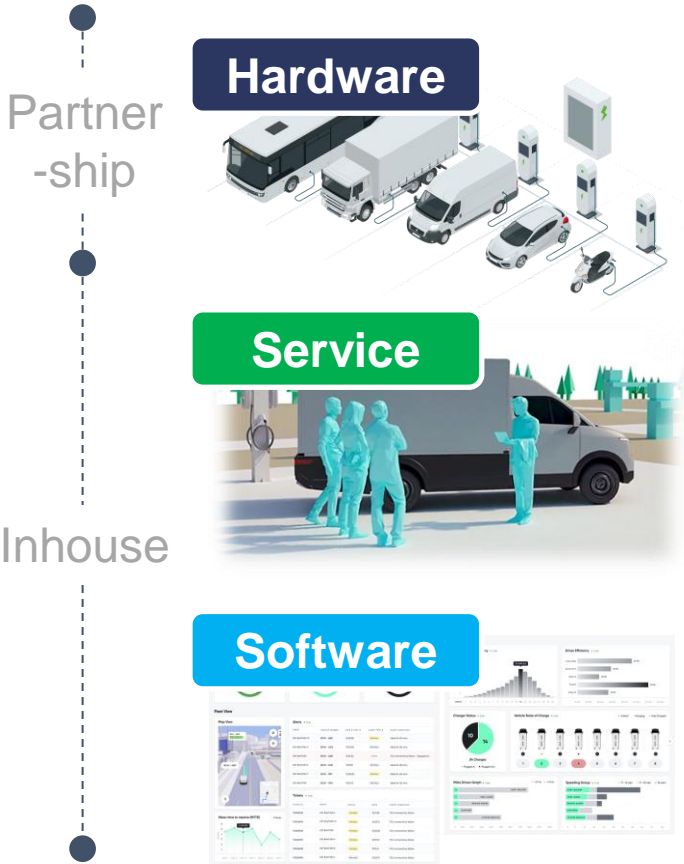


* Total Cost of Ownership

eMotion Fleet supports the full transition from diesel to electric

HOW WE OFFER

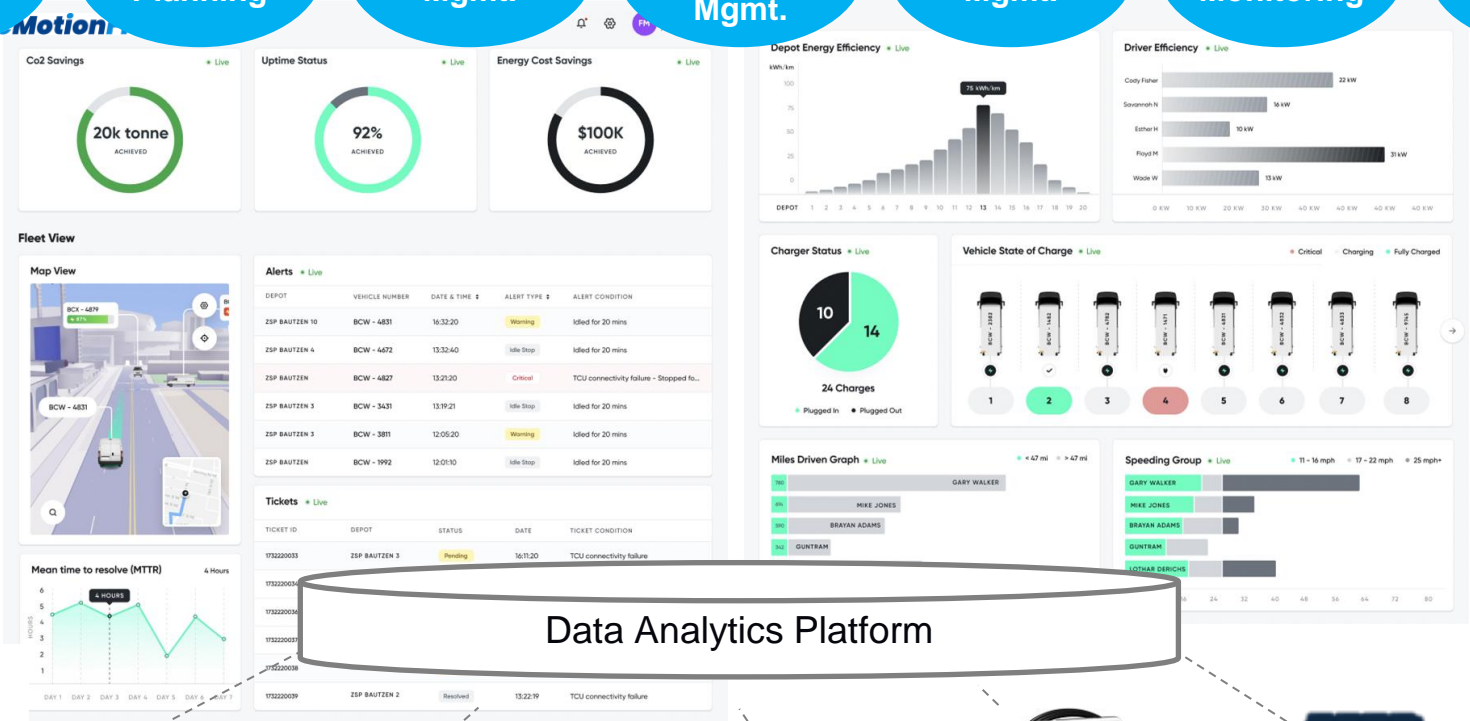
WHAT WE OFFER



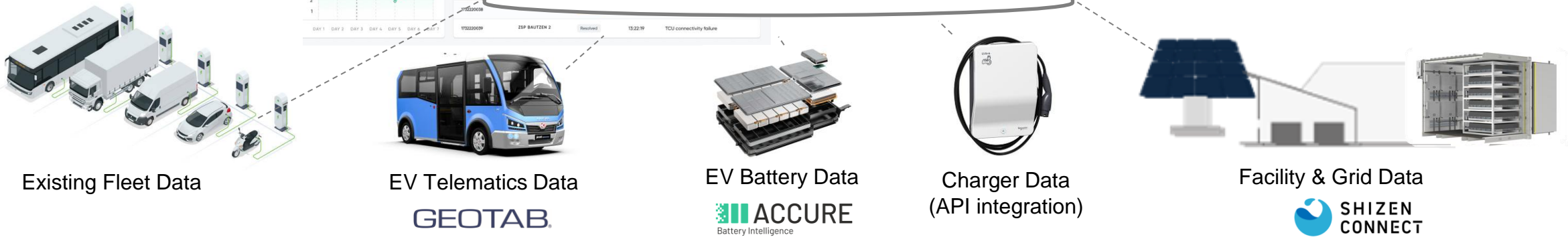
eMotion Fleet Integrated Fleet & Energy Management System (FMS/EMS)



eMotion Fleet manages customer's electric fleet and energy under one integrated platform



Data Analytics Platform



Safety

- Review driving habits
- Improve safety driving
- longer vehicle usage

Fuel Efficiency

- By route/driver analysis
- Idling management
- CO2 monitoring

Operation Optimization

- Digitalization
- Report automation
- Asset reallocation

Our Solutions

Over **4.7mil** usage around the world,
Multi-brand + **Multi-Powertrain** (**Gas · Diesel · Hybrid · EV**)

We are better with

- More accurate, more frequent data collection
- Low-cost implementation + data utilization in a package

<Samples of data collected from vehicle>

- | | |
|-------------------------------|---------------------------------|
| • Battery temperature | • Alcohol composition of fuel |
| • Brake Lining Remaining | • Remaining fuel filter life |
| • Brake temperature | • Fuel level |
| • Cab interior temperature | • Maximum road speed limit |
| • State of charge | • Outside temperature |
| • Coolant level | • Remaining starter brush life |
| • Coolant temperature | • Starter current |
| • Cruise High Speed Limit | • Tire pressure |
| • Engine cooling fan speed | • Transmission oil level |
| • Engine oil level | • Transmission oil temperature |
| • Remaining engine oil life | • Washer fluid level |
| • Engine oil pressure | • Total fuel use |
| • Engine oil temperature | • Seat belt use |
| • Engine RPM | • Mileage traveled |
| • SOC(State of charge) | • Odometer |
| • SOH(State of Health) | • Fault codes raised by vehicle |

GEOTAB®



※eMotion Fleet is distributor for Geotab in Asia

※Data availability depends on vehicle

eMotion Fleet offers right solutions based on customer's electrification stage

Customer Stage

Pre-EV

EV POC

EV Fleet at Scale

Telematics in Diesel Vehicles

Fleet Electrification Consulting

EV Fleet & Energy Management

EV Fleet-as-a-Service

Our Solutions

Service

Software

Hardware

Service

Software

Hardware

Service

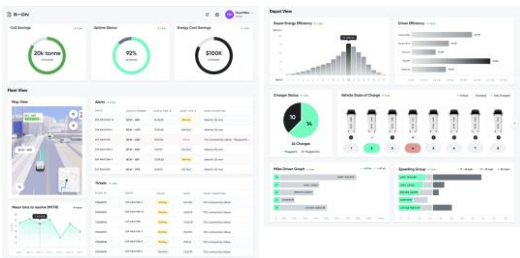
Software

Hardware

Service

Software

Hardware



Customer Value

Low-carbonize before de-carbonize

Smooth transition to EV fleet

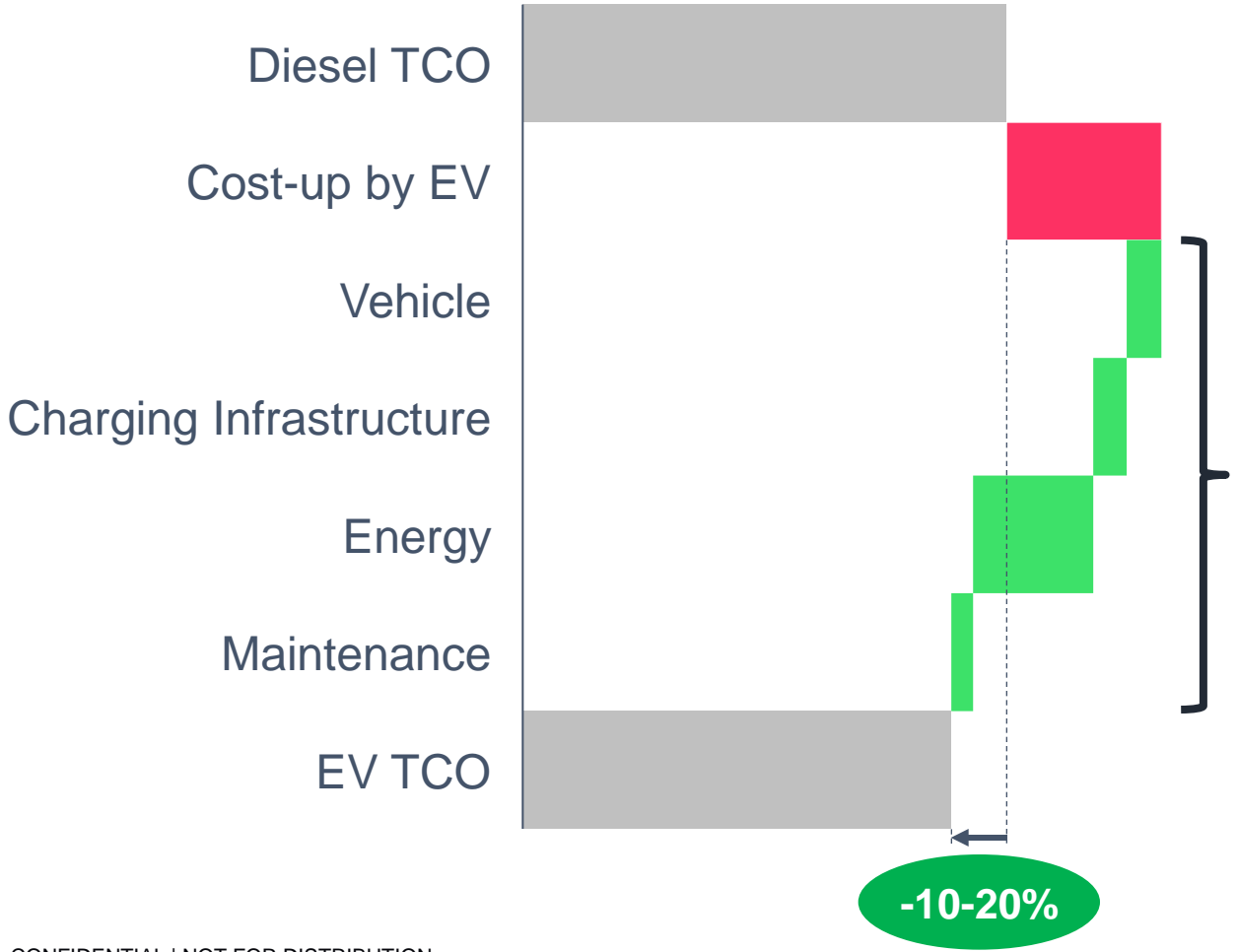
Integrated EV & energy management

Full shift to EV with zero CapEx

Democratization of EV Fleet

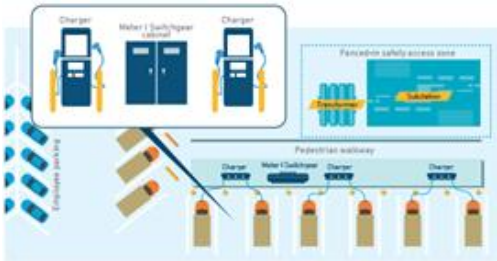
eMotion Fleet reduces customer's lifecycle cost by 10-20%

Total Cost of Ownership (TCO) Impact

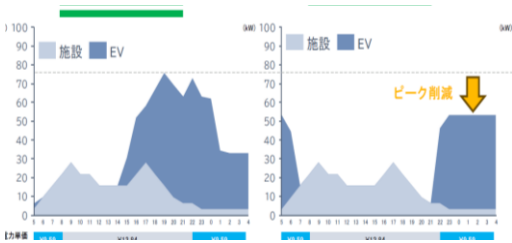


Maximize EV Uptime
Extend Asset Lifetime

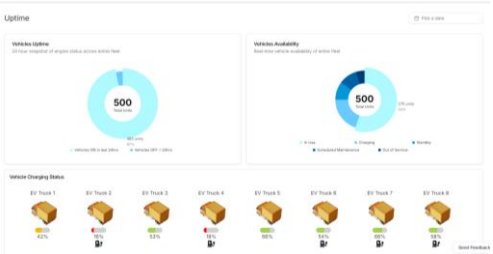
Rightsized charging infrastructure planning



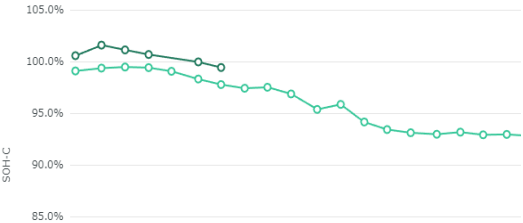
Smart charging & energy management



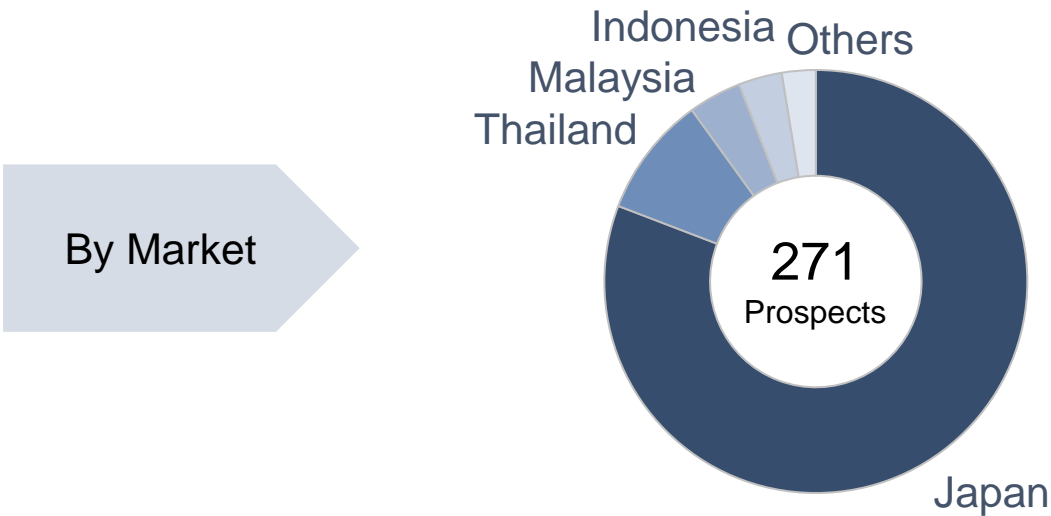
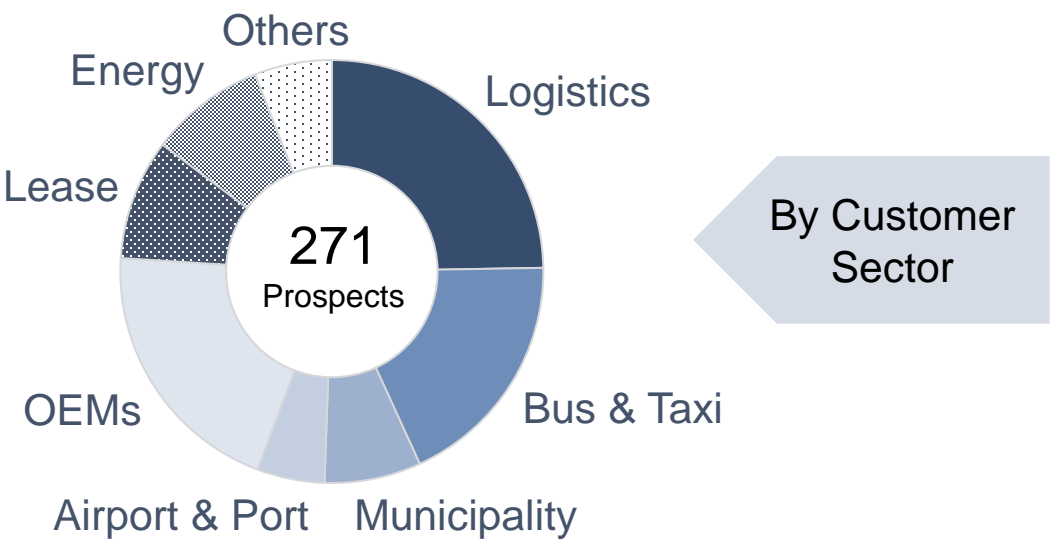
EV uptime management



Battery health management



eMotion Fleet targets APAC markets and in talks with 270+ prospects





eMotionFleet

*Drive decarbonization
and profitability through
smart EV fleet solutions*